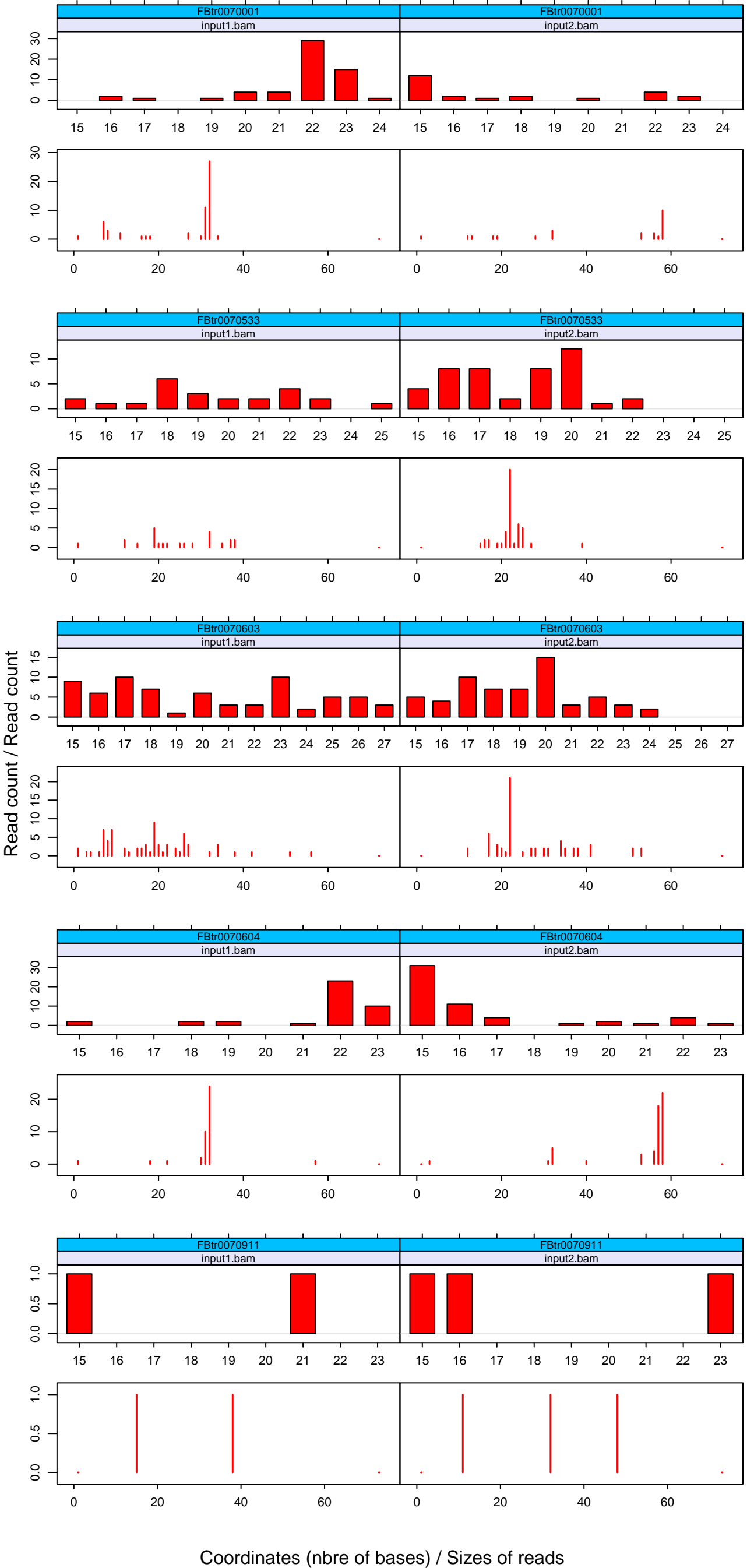
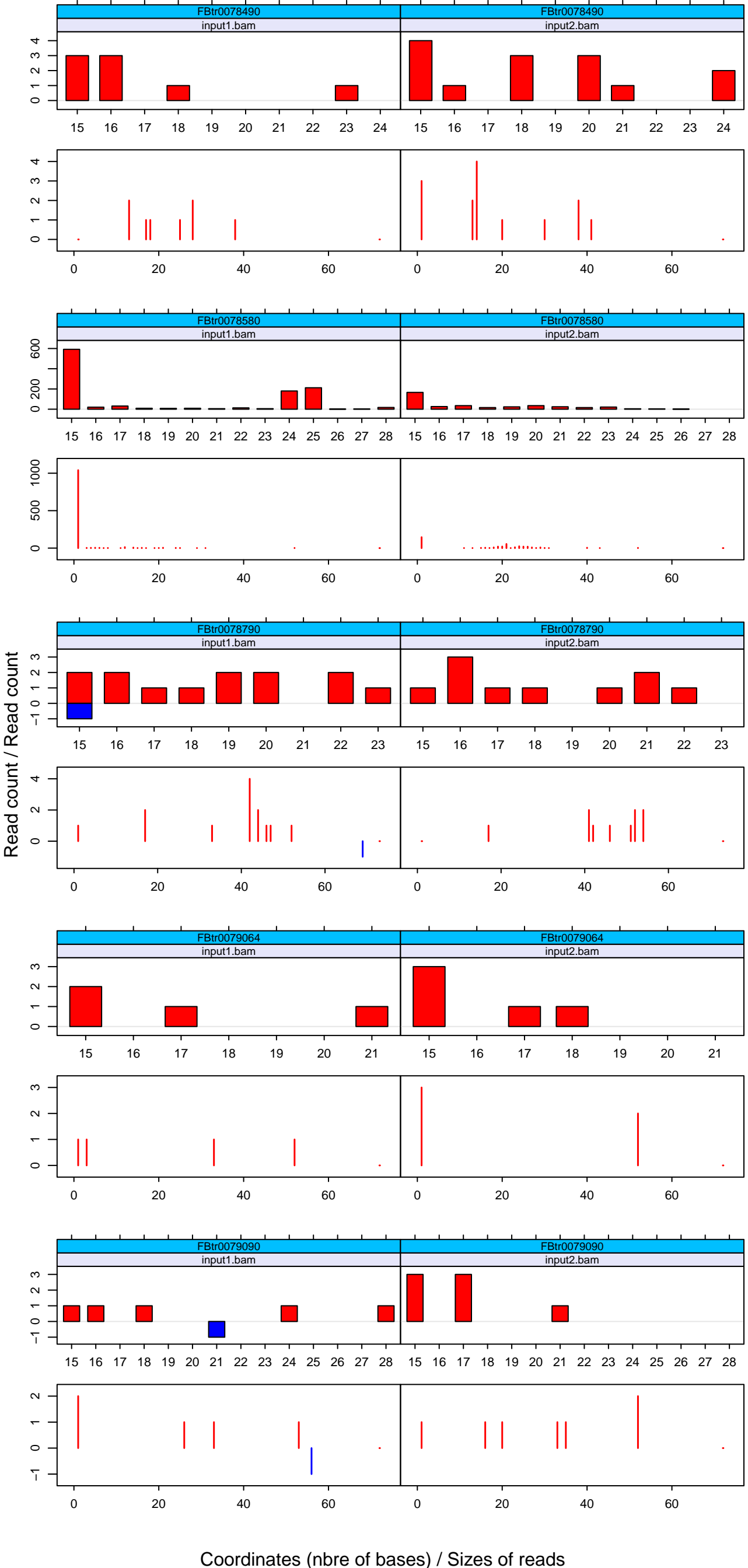


# Read Counts and Size Distributions

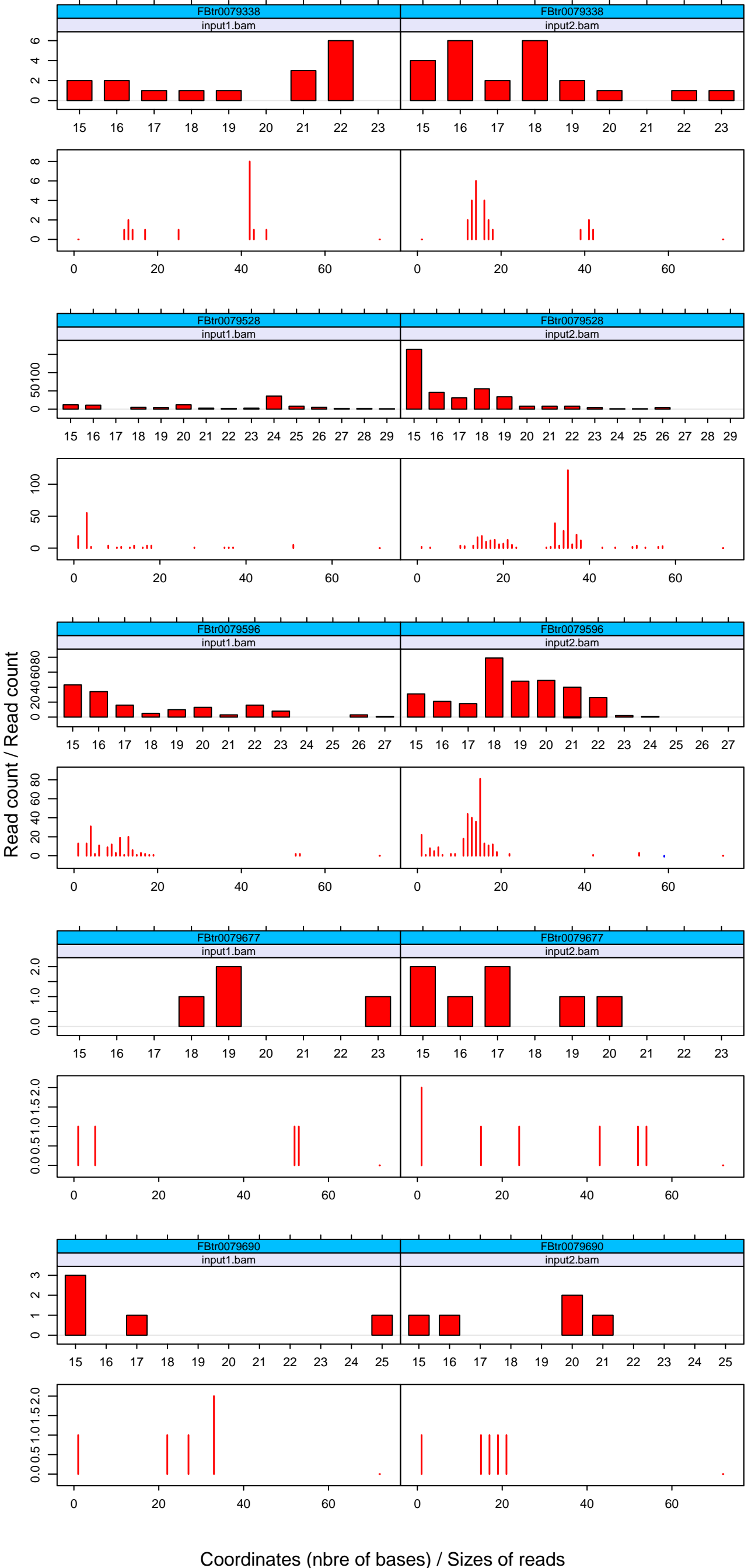


Coordinates (nbre of bases) / Sizes of reads

# Read Counts and Size Distributions

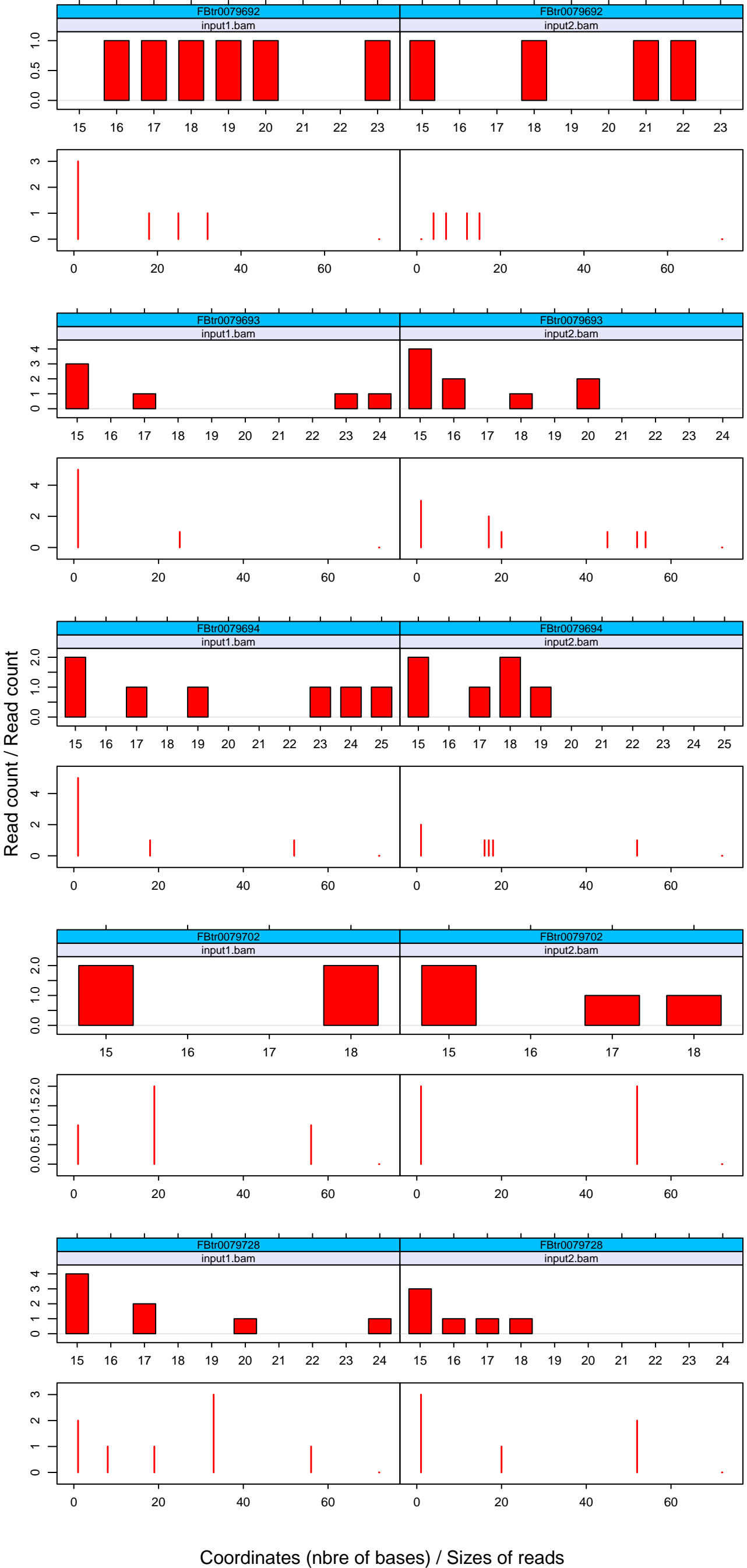


# Read Counts and Size Distributions

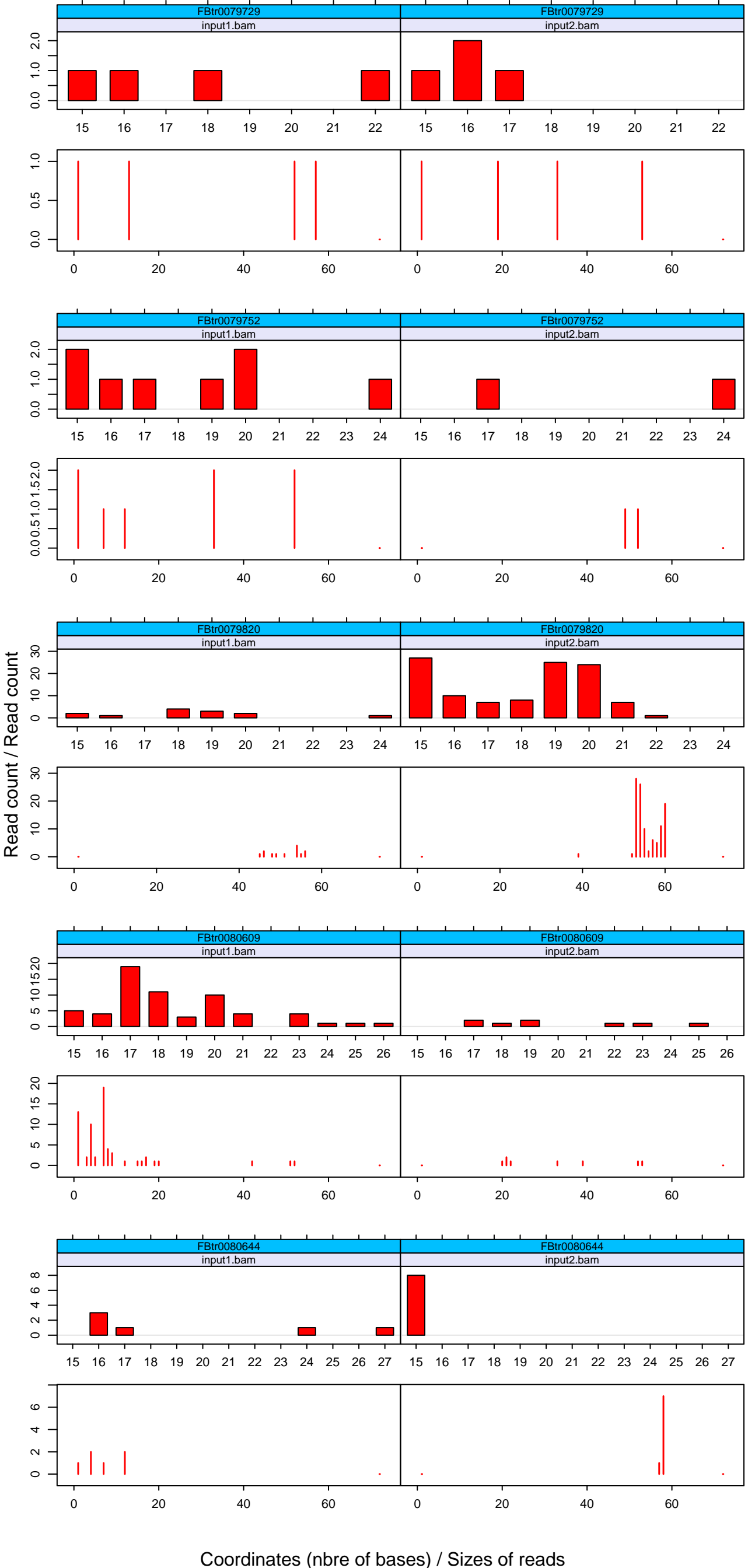


Coordinates (nbre of bases) / Sizes of reads

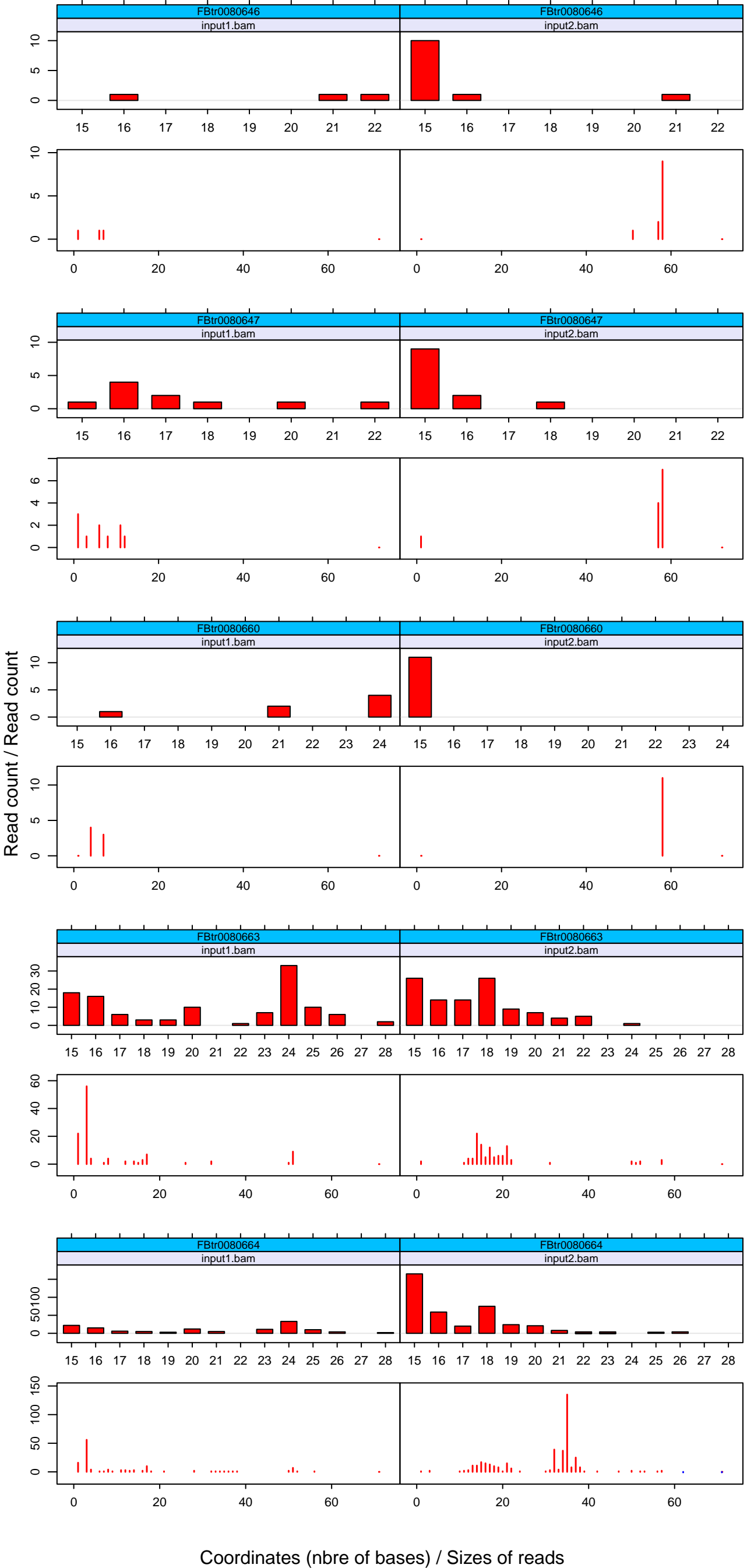
# Read Counts and Size Distributions



# Read Counts and Size Distributions



# Read Counts and Size Distributions



Coordinates (nbre of bases) / Sizes of reads