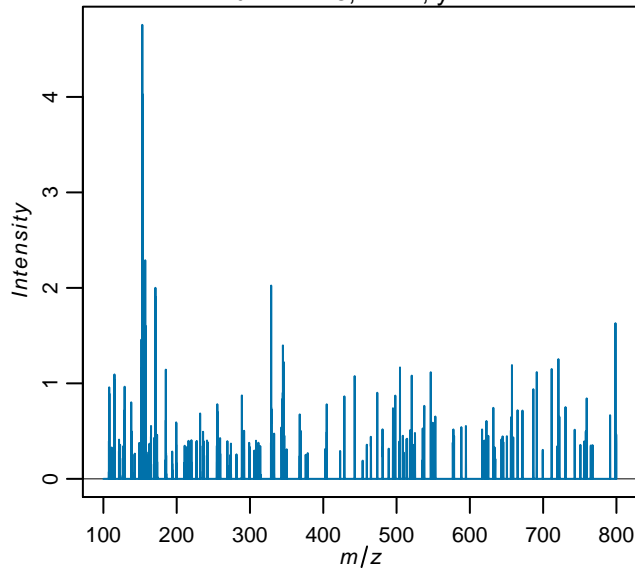


Quality control during preprocessing

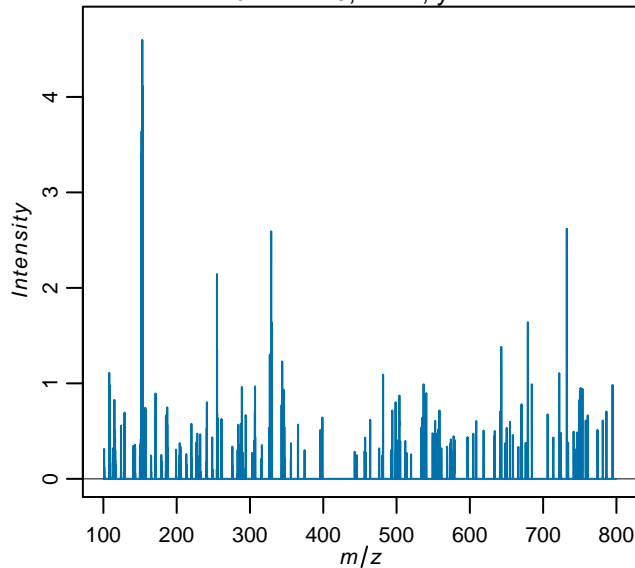
Filename: files_

Input spectra

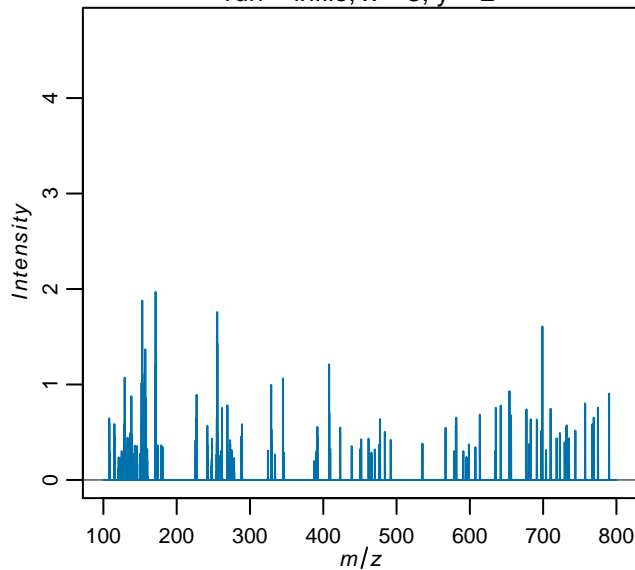
run = infile, x = 2, y = 1



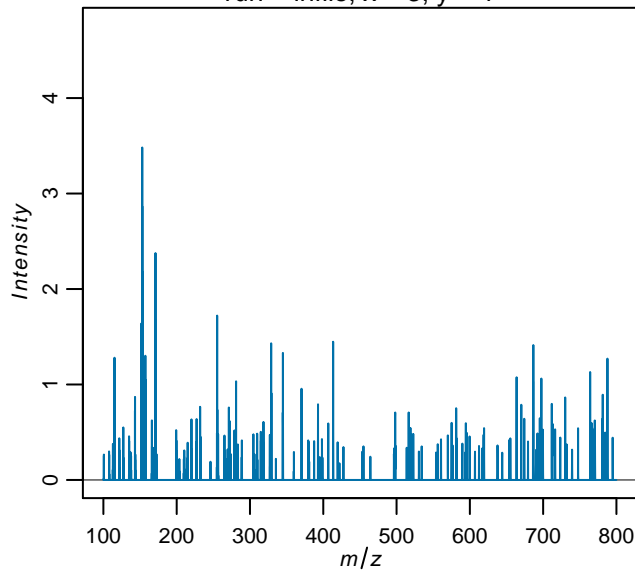
run = infile, x = 1, y = 2



run = infile, x = 3, y = 2

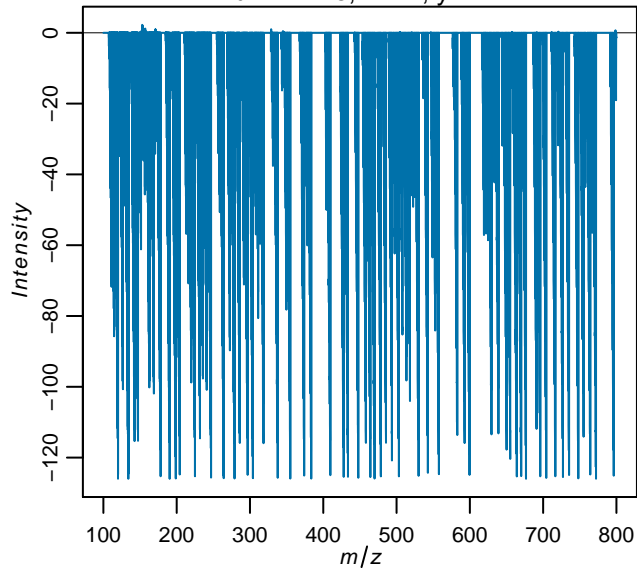


run = infile, x = 3, y = 1

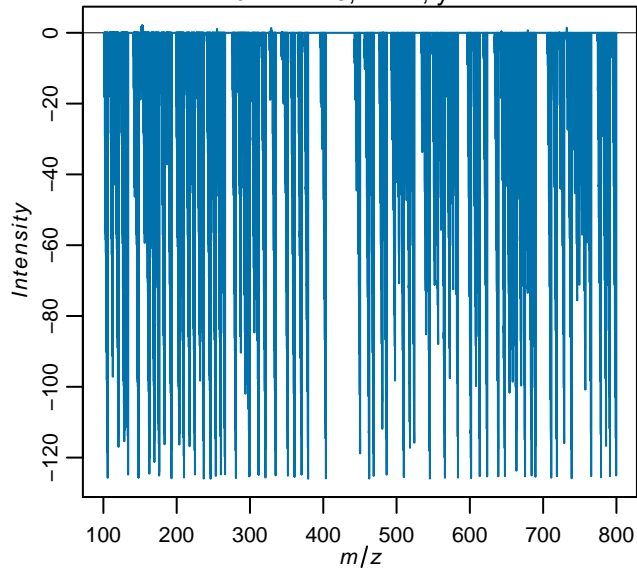


Spectra after transformation

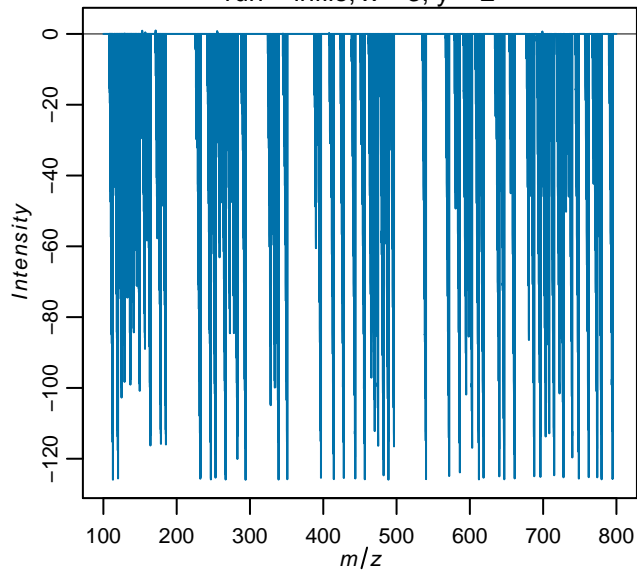
run = infile, x = 2, y = 1



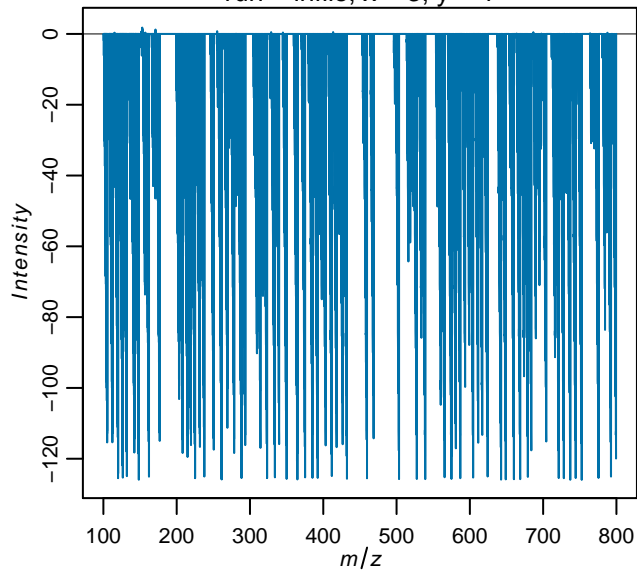
run = infile, x = 1, y = 2



run = infile, x = 3, y = 2

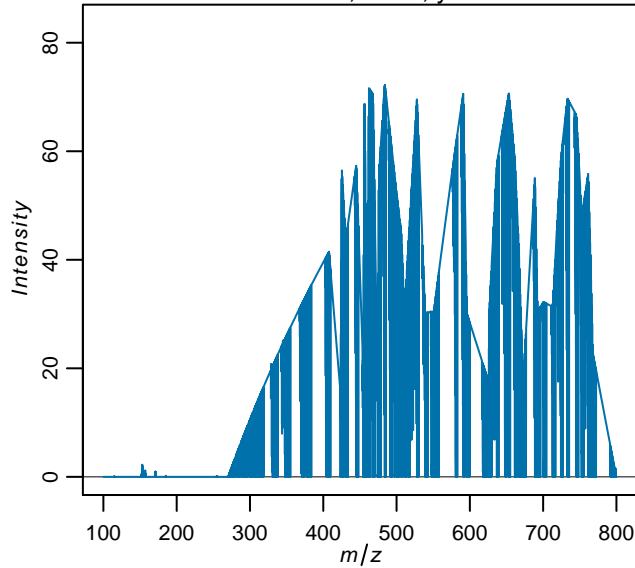


run = infile, x = 3, y = 1

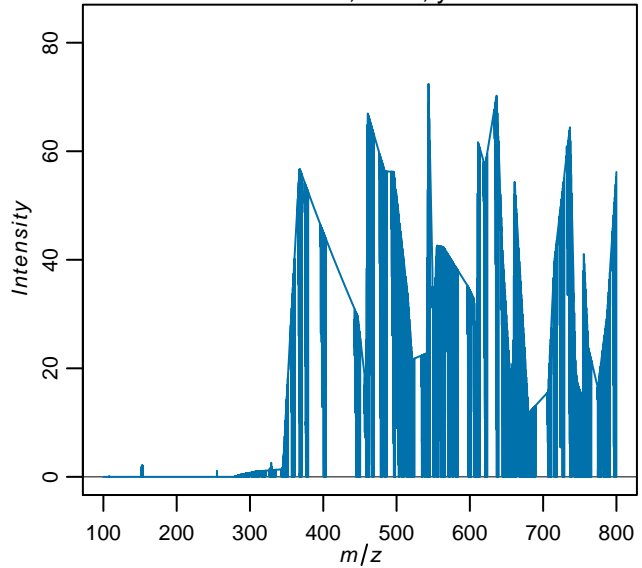


Spectra after baseline reduction

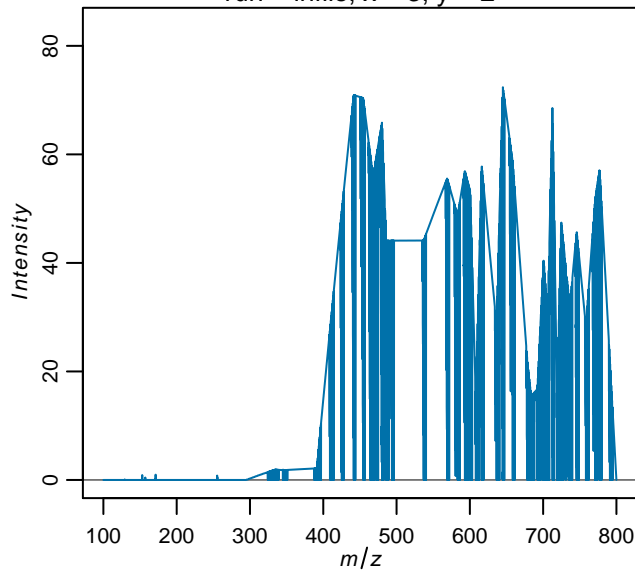
run = infile, x = 2, y = 1



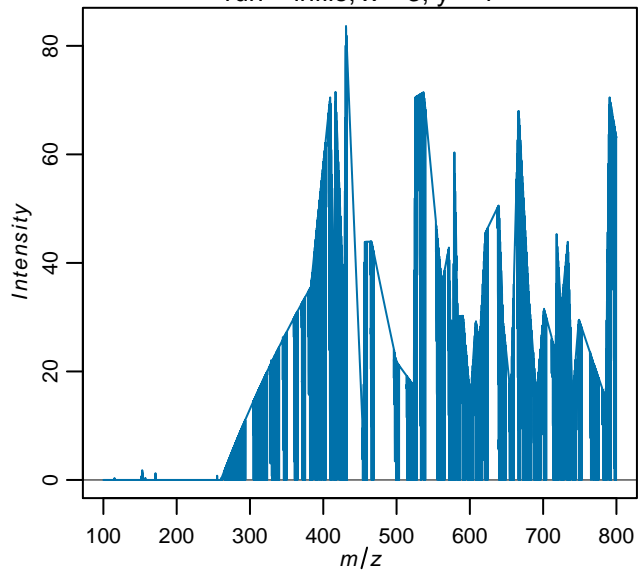
run = infile, x = 1, y = 2



run = infile, x = 3, y = 2



run = infile, x = 3, y = 1



	min m/z	max mz	# features	# spectra
<i>inputdata</i>	100	799.97	10398	9
<i>transformed</i>	100	799.97	10398	9
<i>baseline</i>	100	799.97	10398	9