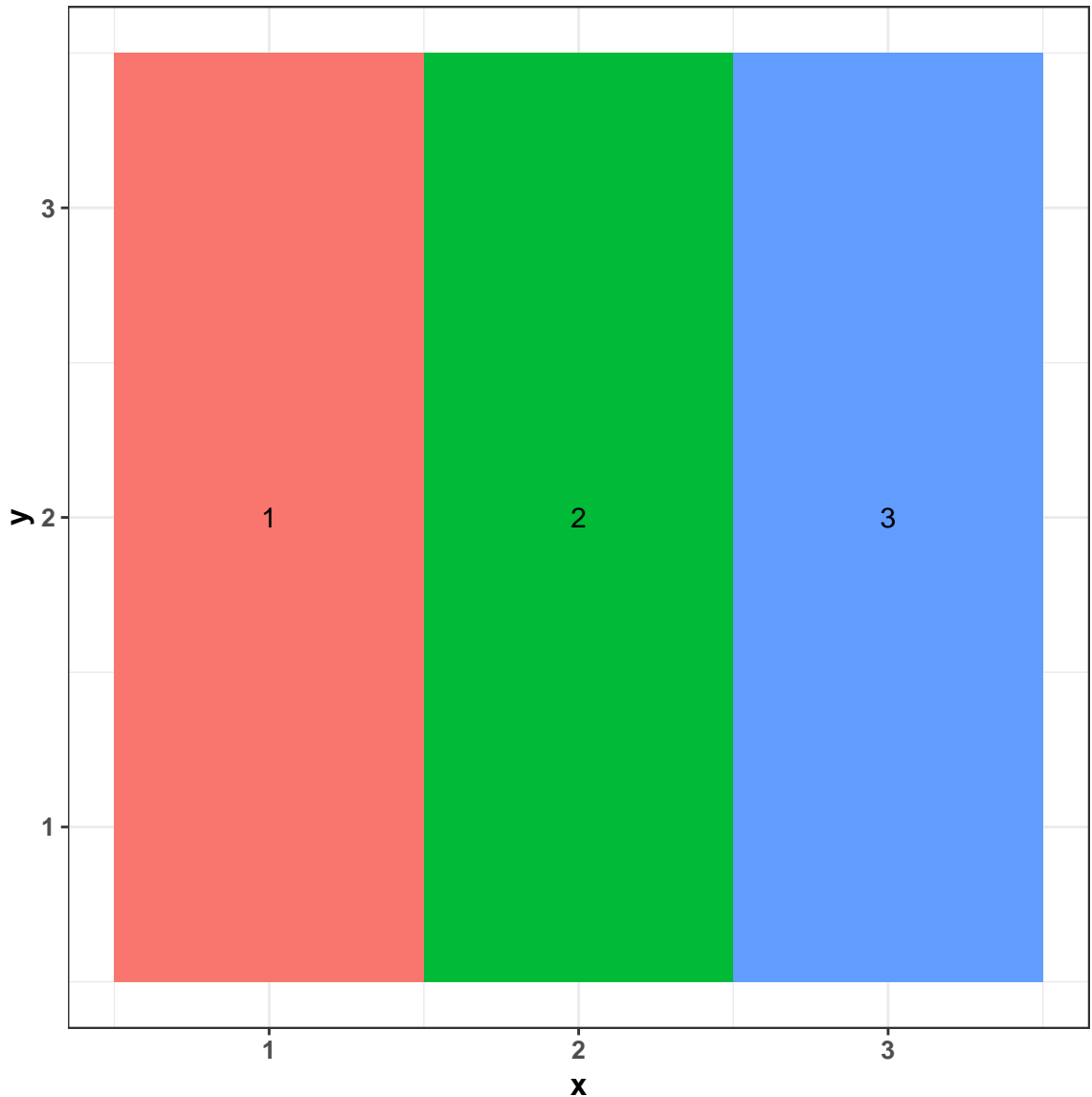


# Mass spectra for file:

## Analyze75

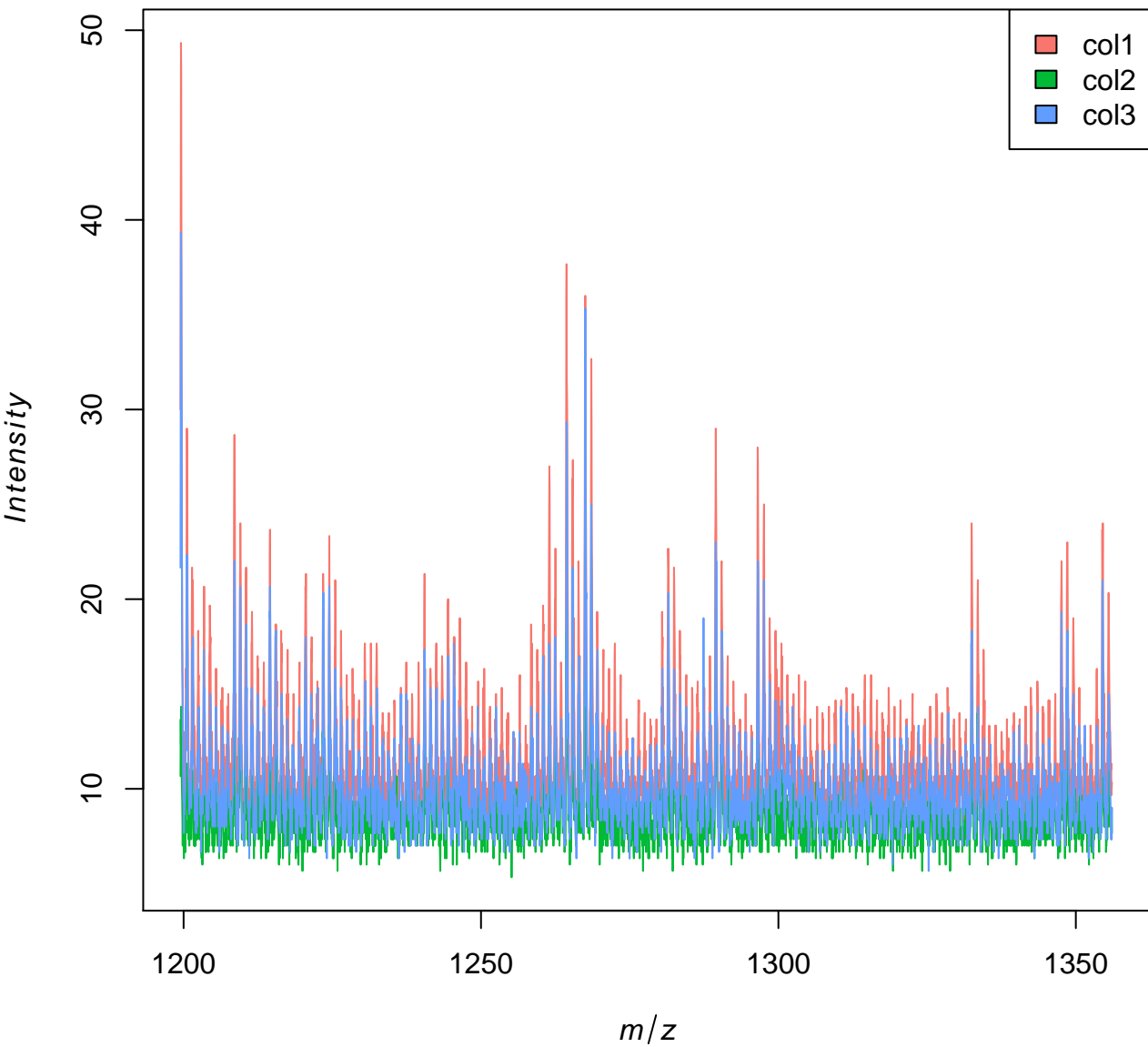
<b>properties</b>	<b>values</b>
Number of m/z features	3672
Range of m/z values	1199.47 – 1356.08
Number of pixels	9
Range of x coordinates	1 – 3
Range of y coordinates	1 – 3
Range of intensities	3 – 84

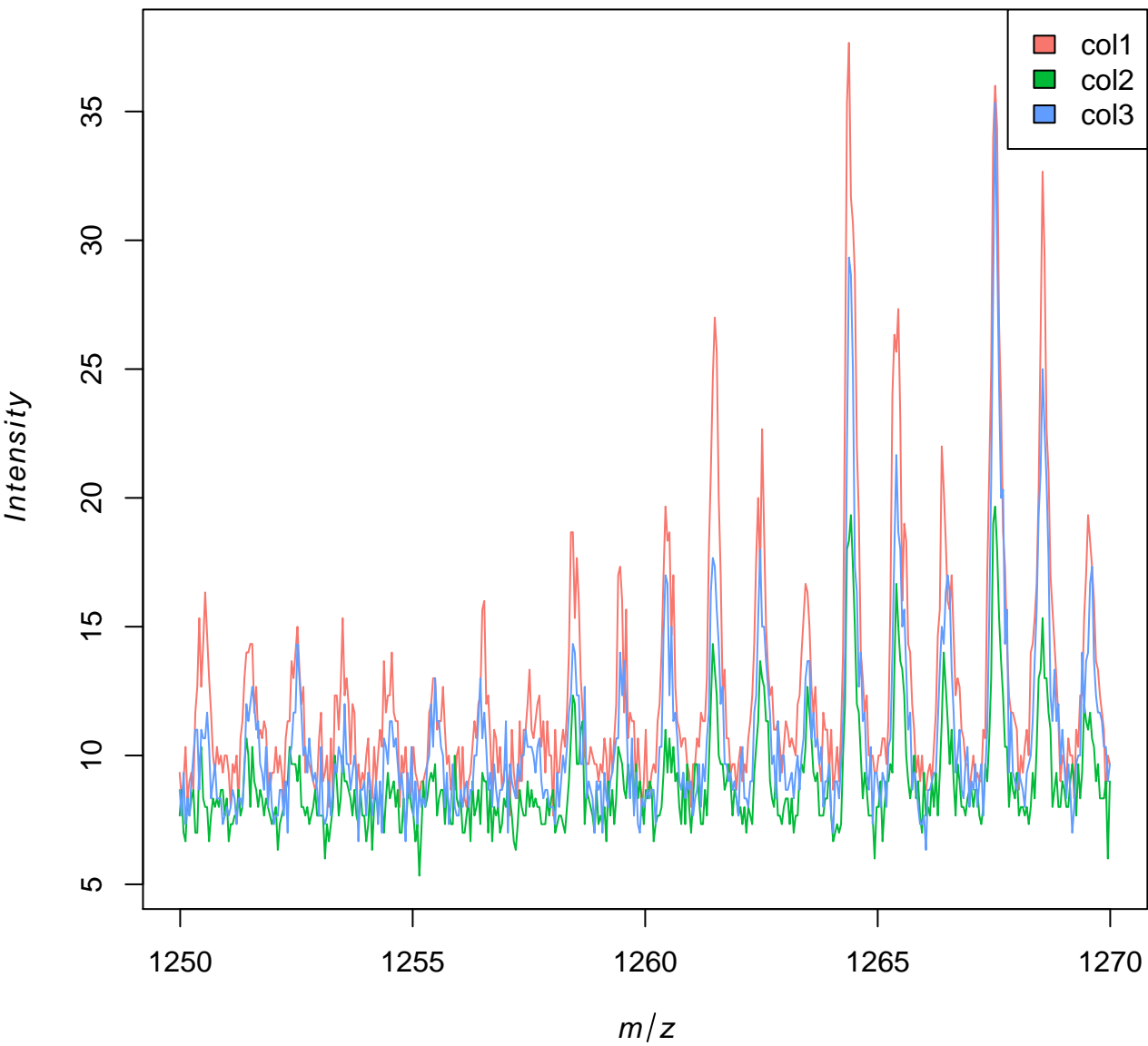
# Spatial orientation of pixel annotations



**sample\_name**

col1 col2 col3





## Overview of chosen pixel:

sample name	number of pixels
col1	3
col2	3
col3	3