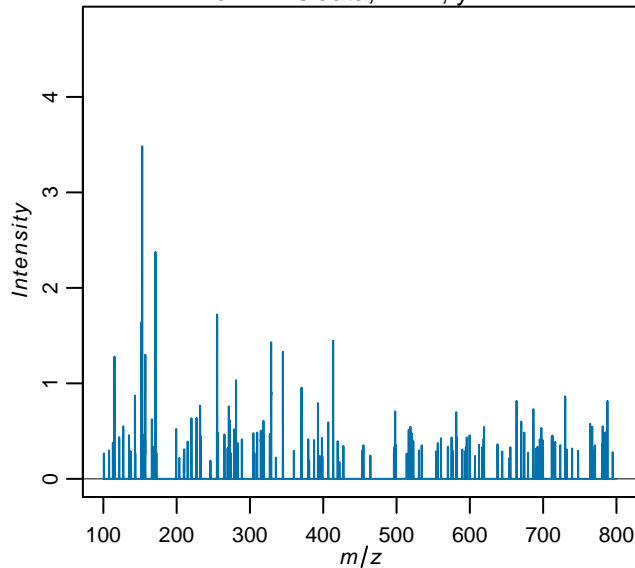


Quality control during preprocessing

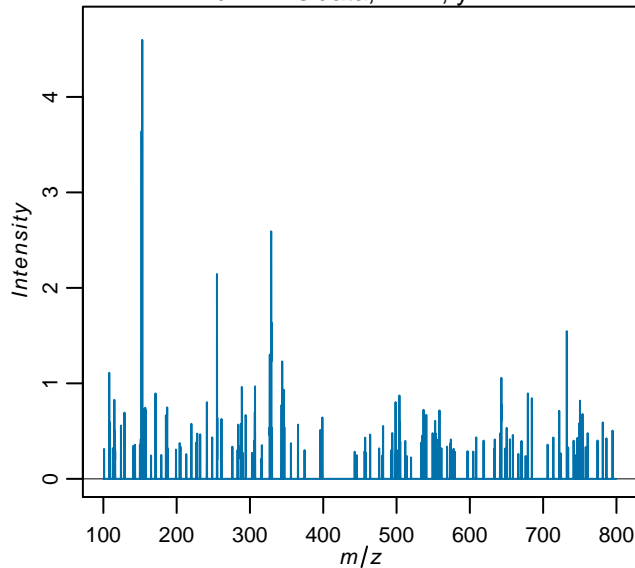
Filename: 3_files_combined.RData

Input spectra

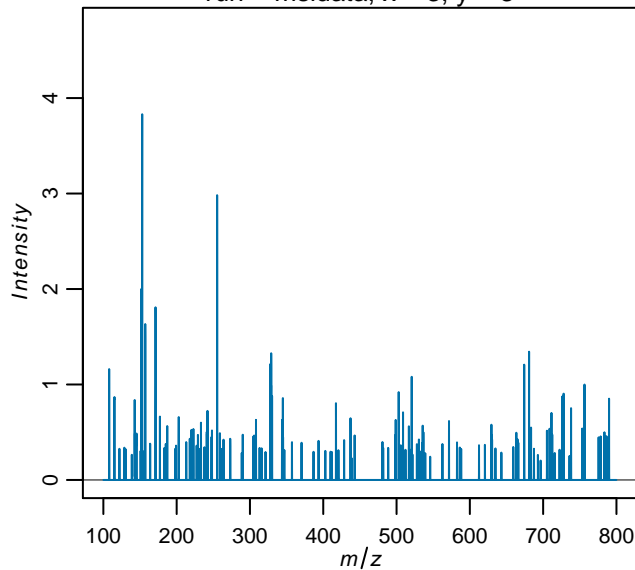
run = msdata, x = 4, y = 1



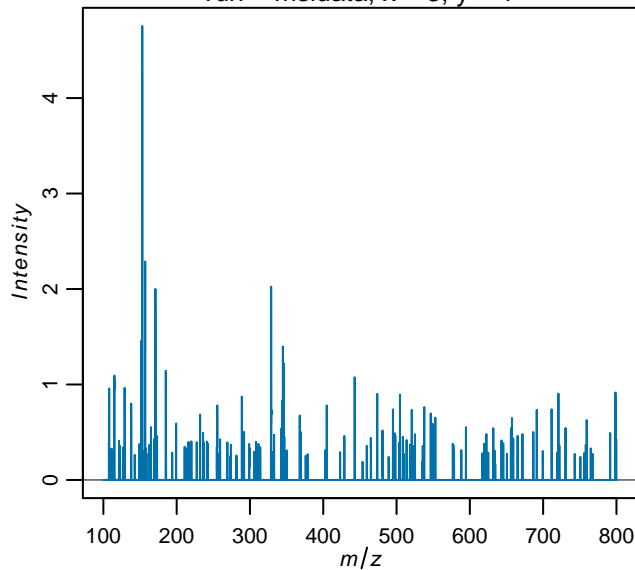
run = msdata, x = 1, y = 2



run = msdata, x = 3, y = 3

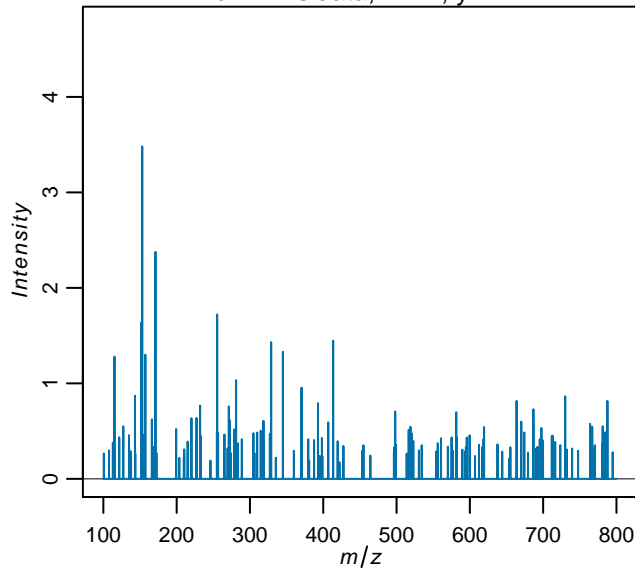


run = msdata, x = 3, y = 1

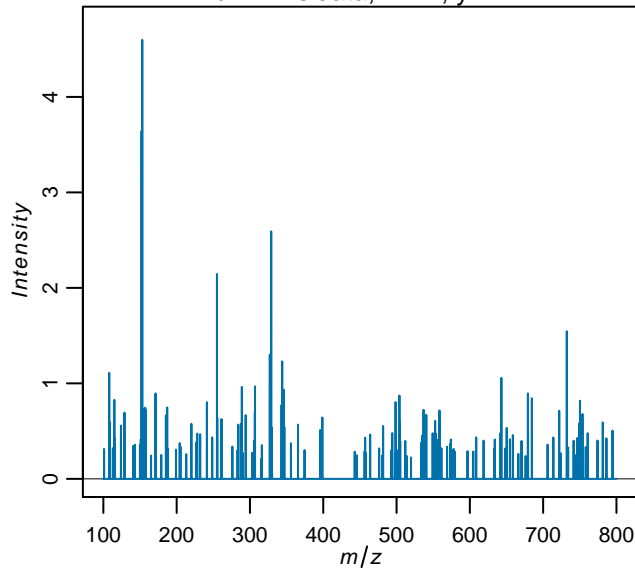


Spectra after peak picking

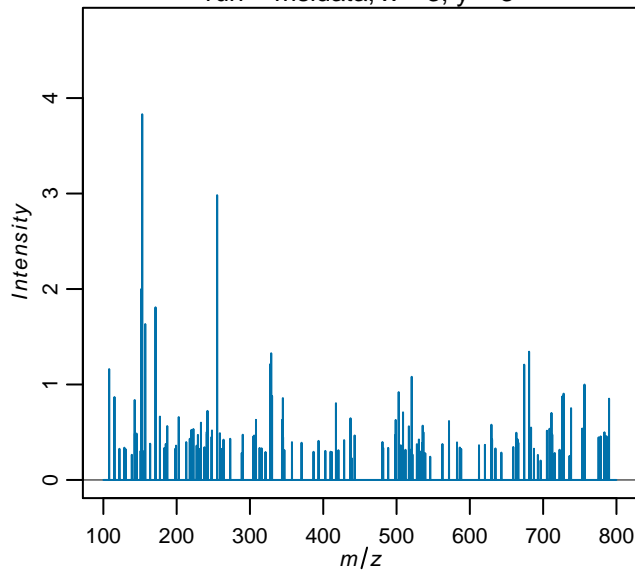
run = msdata, x = 4, y = 1



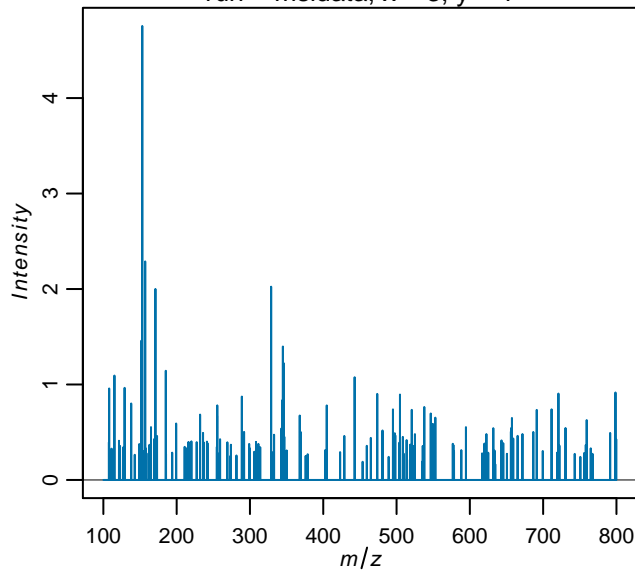
run = msdata, x = 1, y = 2



run = msdata, x = 3, y = 3

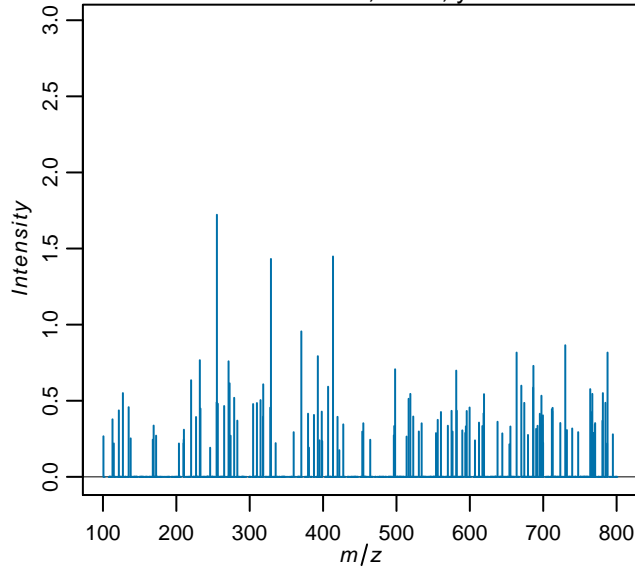


run = msdata, x = 3, y = 1

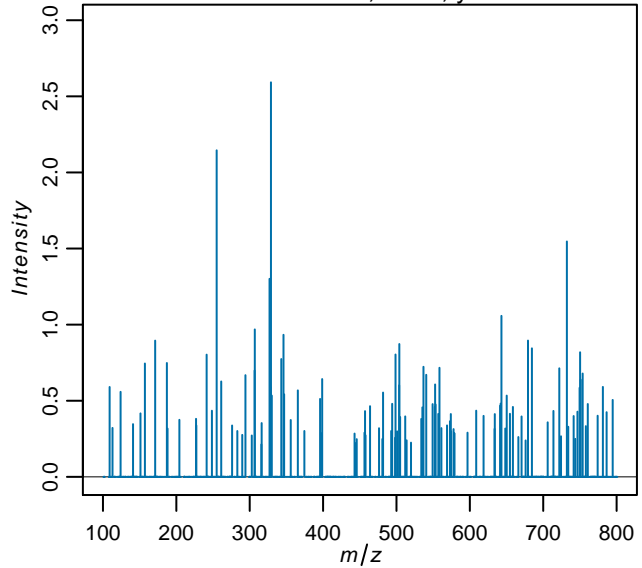


Spectra after alignment

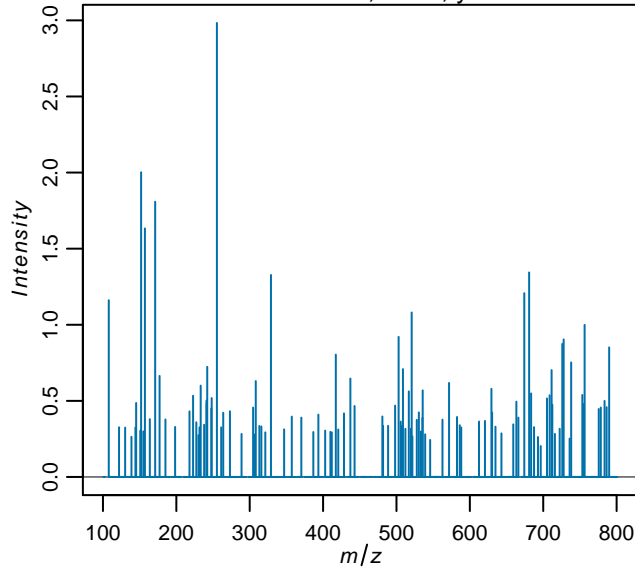
run = msdata, x = 4, y = 1



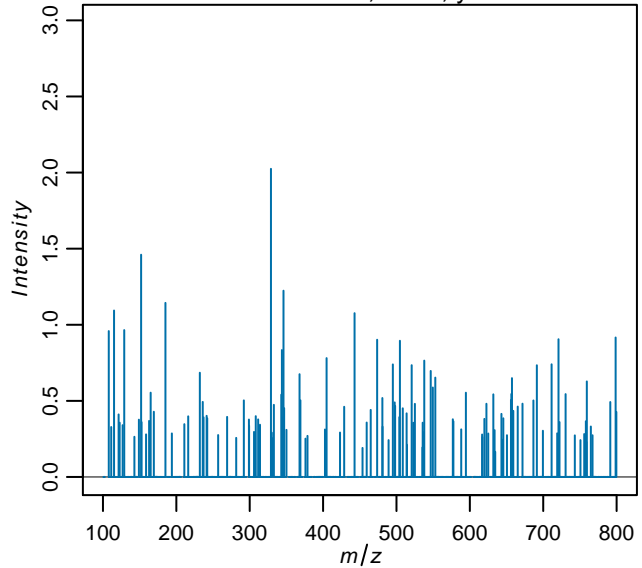
run = msdata, x = 1, y = 2



run = msdata, x = 3, y = 3



run = msdata, x = 3, y = 1



	min m/z	max mz	# features	# spectra
<i>inputdata</i>	100.08	799.92	8399	12
<i>picked</i>	100.08	799.92	8399	12
<i>aligned</i>	100.67	799.67	719	12