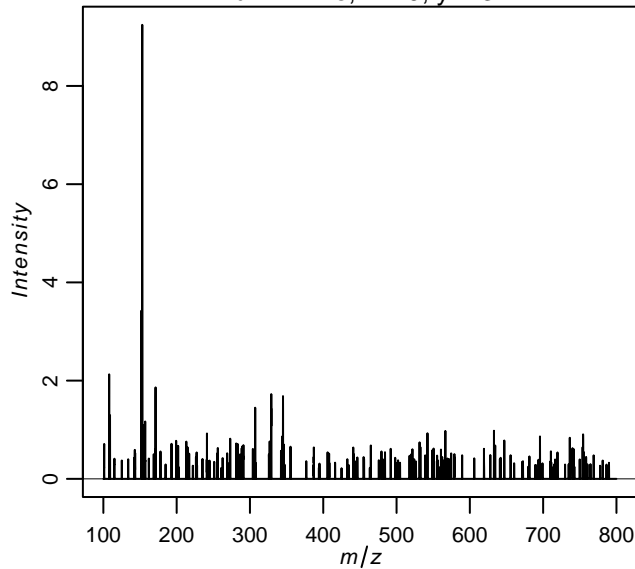


**Quality control during preprocessing**

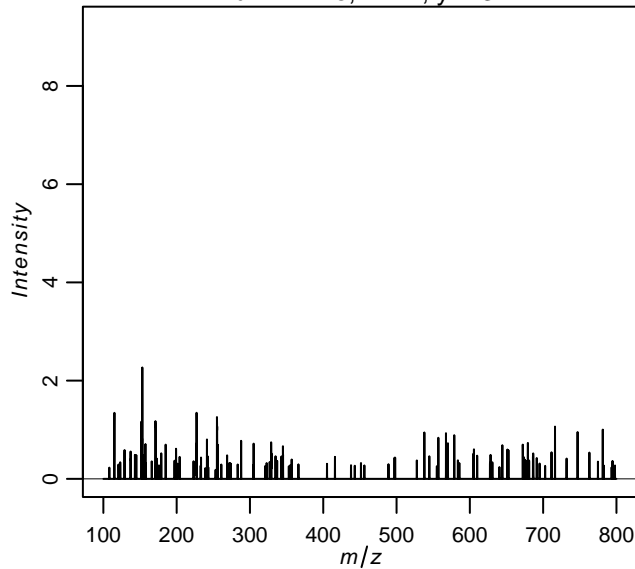
**Filename: 3\_files\_combined.RData**

# Input spectra

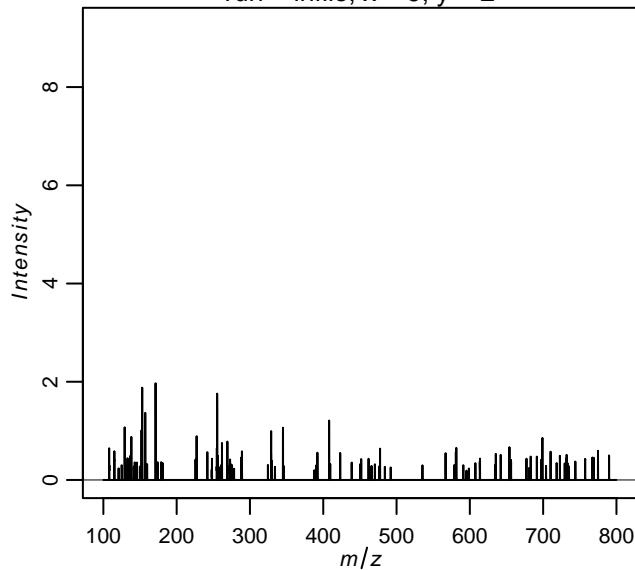
run = infile, x = 9, y = 3



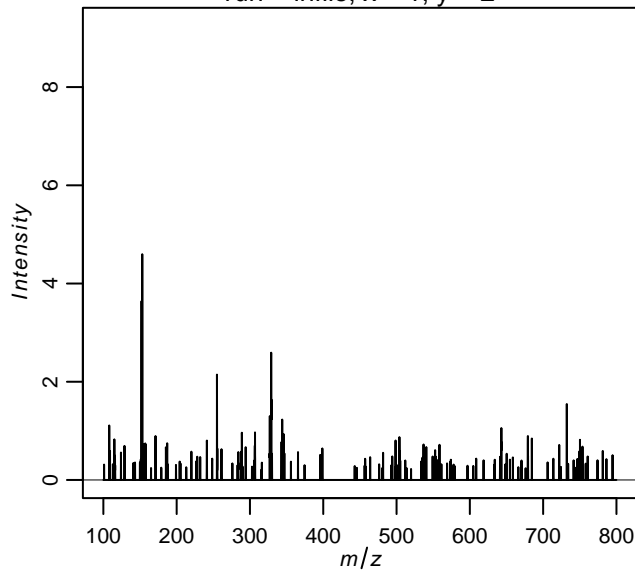
run = infile, x = 1, y = 3



run = infile, x = 9, y = 2

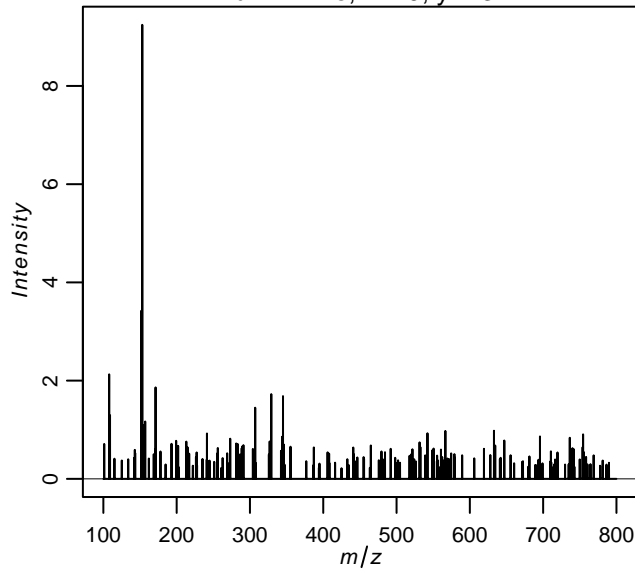


run = infile, x = 1, y = 2

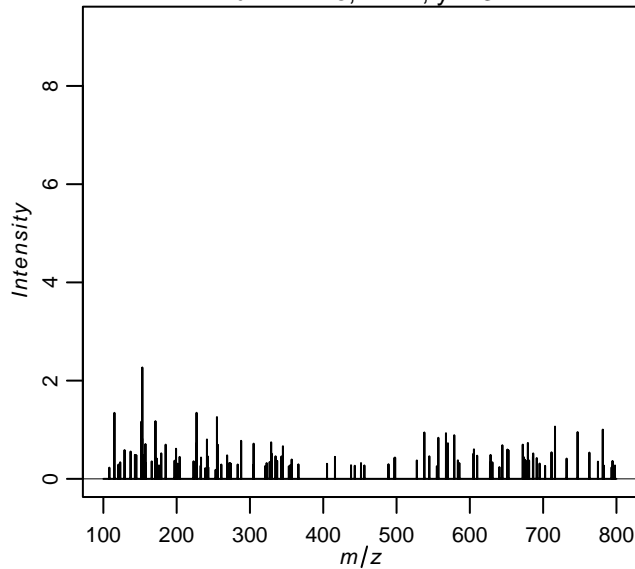


# Spectra after peak picking

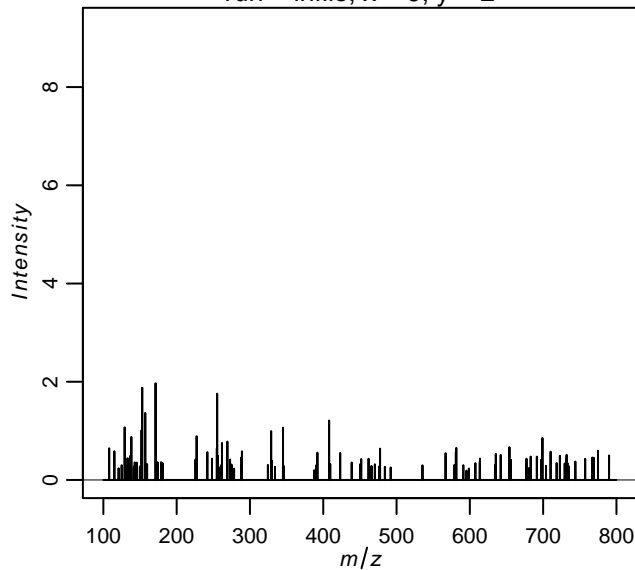
run = infile, x = 9, y = 3



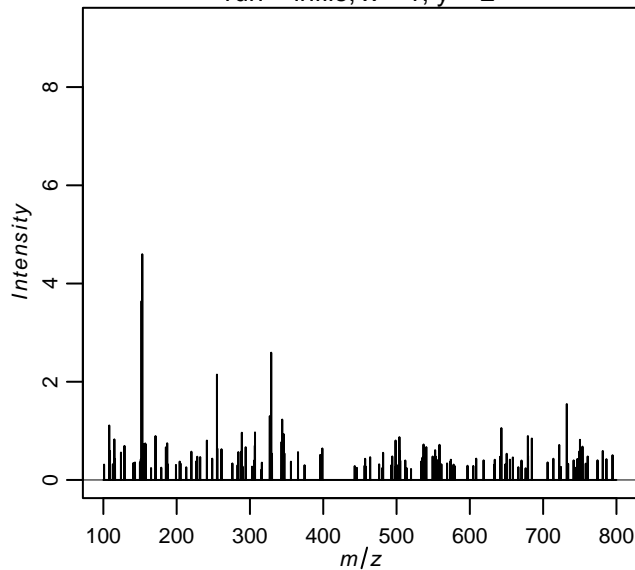
run = infile, x = 1, y = 3



run = infile, x = 9, y = 2

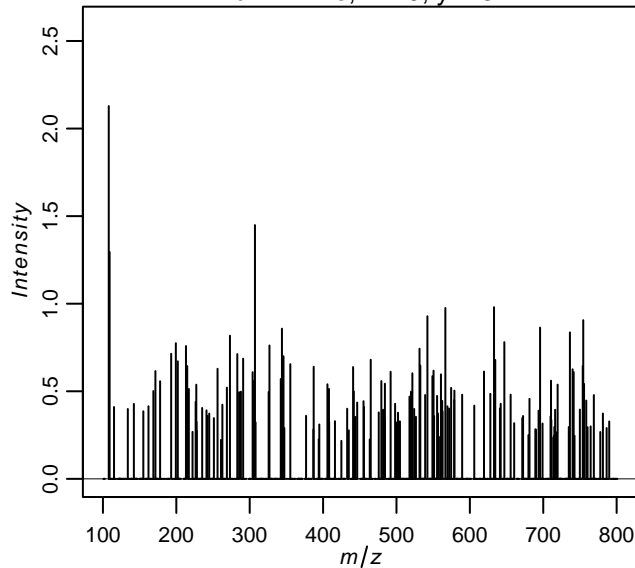


run = infile, x = 1, y = 2

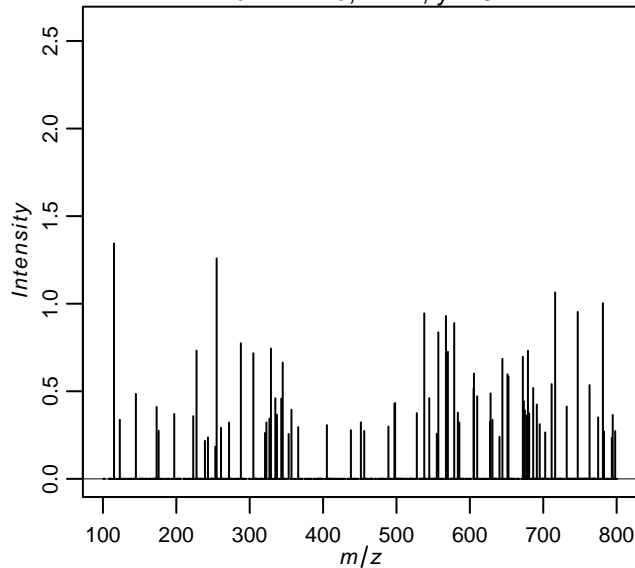


# Spectra after alignment

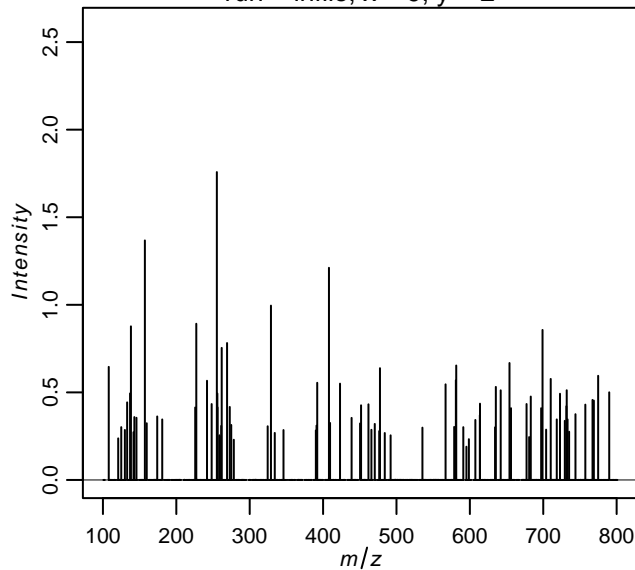
run = infile, x = 9, y = 3



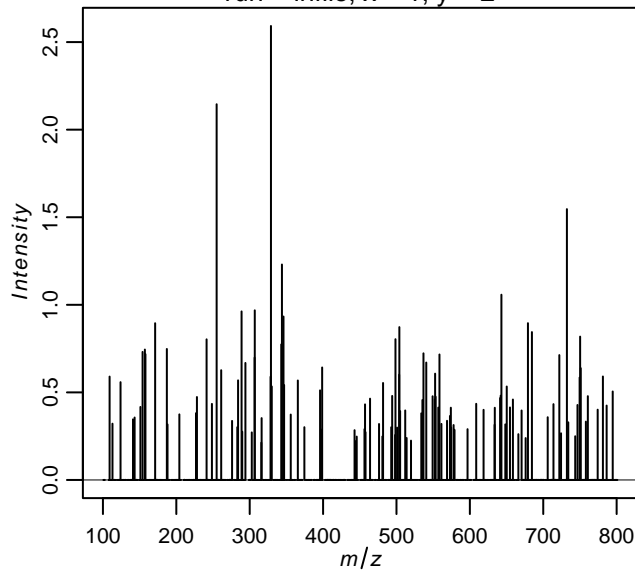
run = infile, x = 1, y = 3



run = infile, x = 9, y = 2



run = infile, x = 1, y = 2



	<b>min m/z</b>	<b>max mz</b>	<b># features</b>	<b># spectra</b>
<i>inputdata</i>	100.08	799.92	8399	12
<i>picked</i>	100.08	799.92	8399	12
<i>aligned</i>	100.67	799.67	719	12