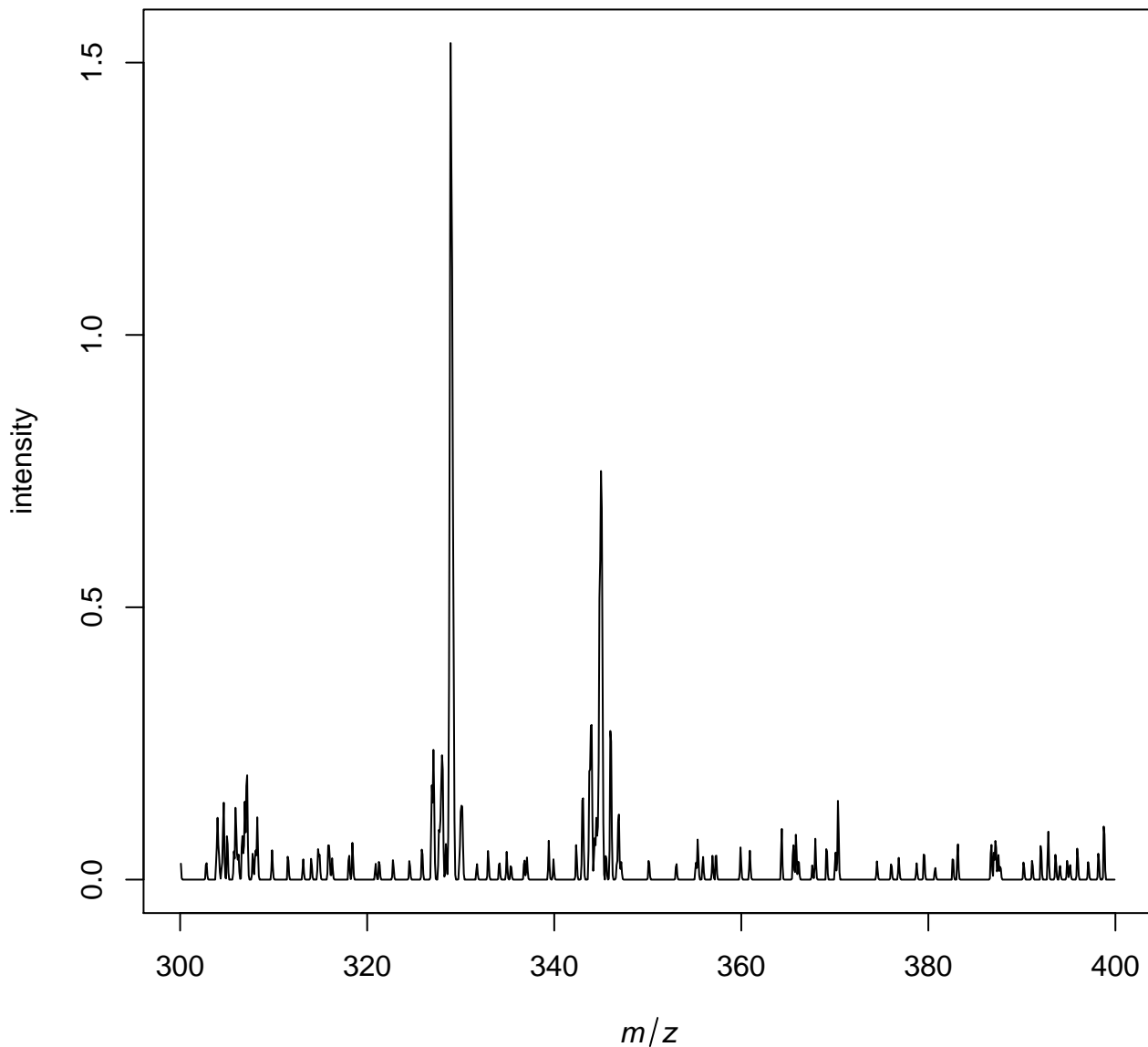
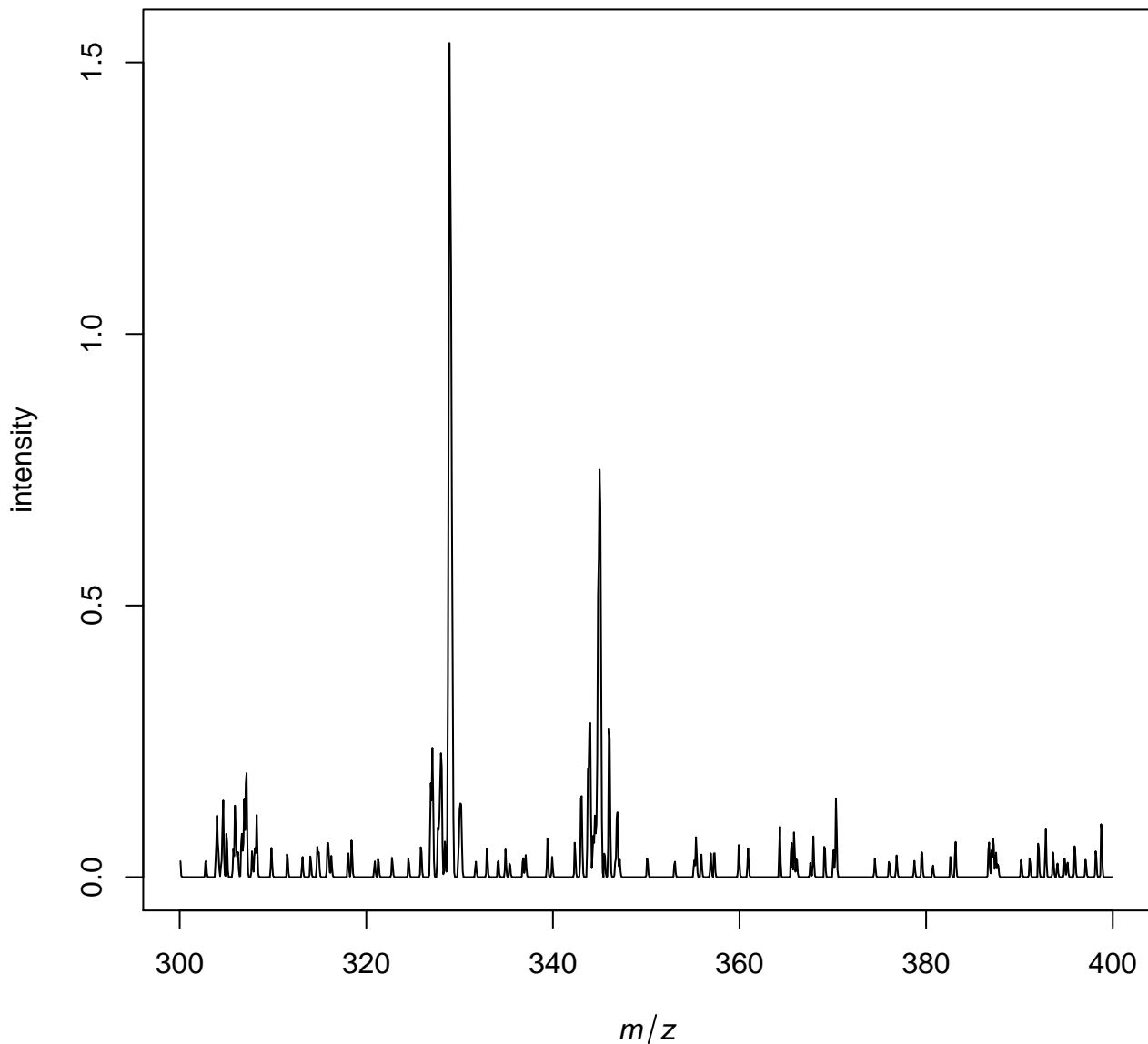


Example_Continuous.i

Average spectrum for input file



Average spectrum after normalization



	min m/z	max mz	# features	median # peaks (int.>0)	median intensity	pixel number
<i>inputdata</i>	300.0833	399.9167	1199	1199	0	9
<i>calibrated</i>	300.0833	399.9167	1199	1199	0	9