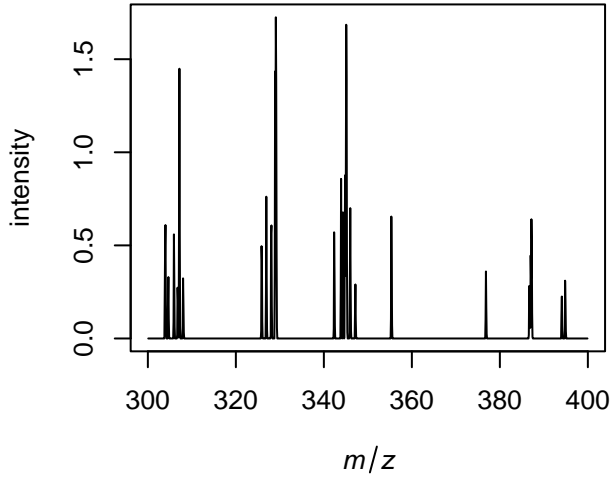


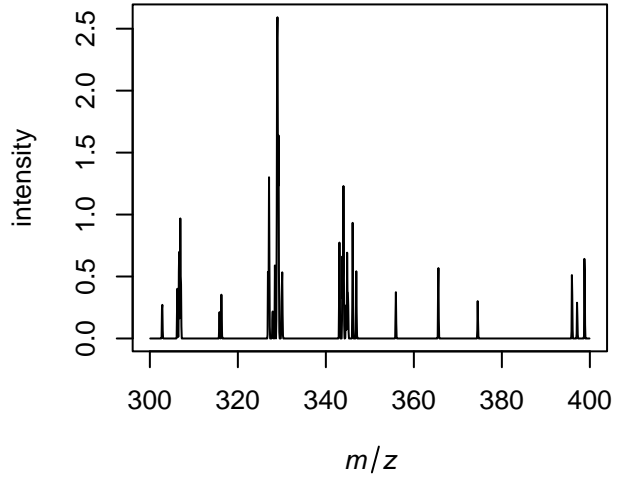
Example_Continuous.i

Input spectra

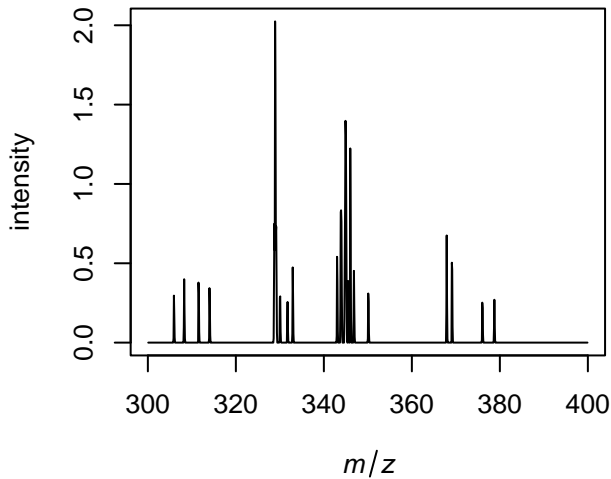
spectrum xy_3_3



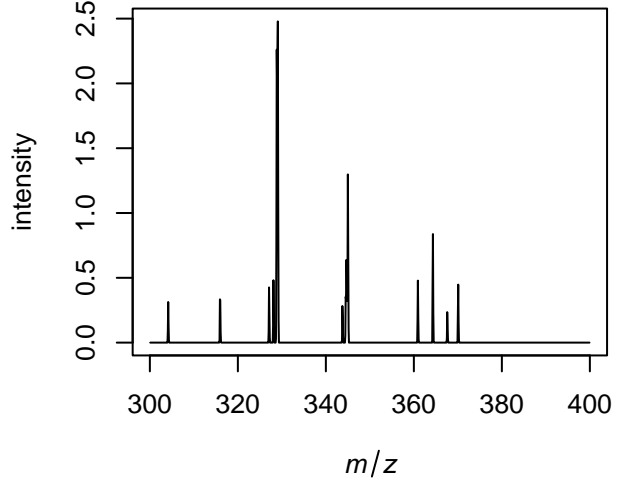
spectrum xy_1_2



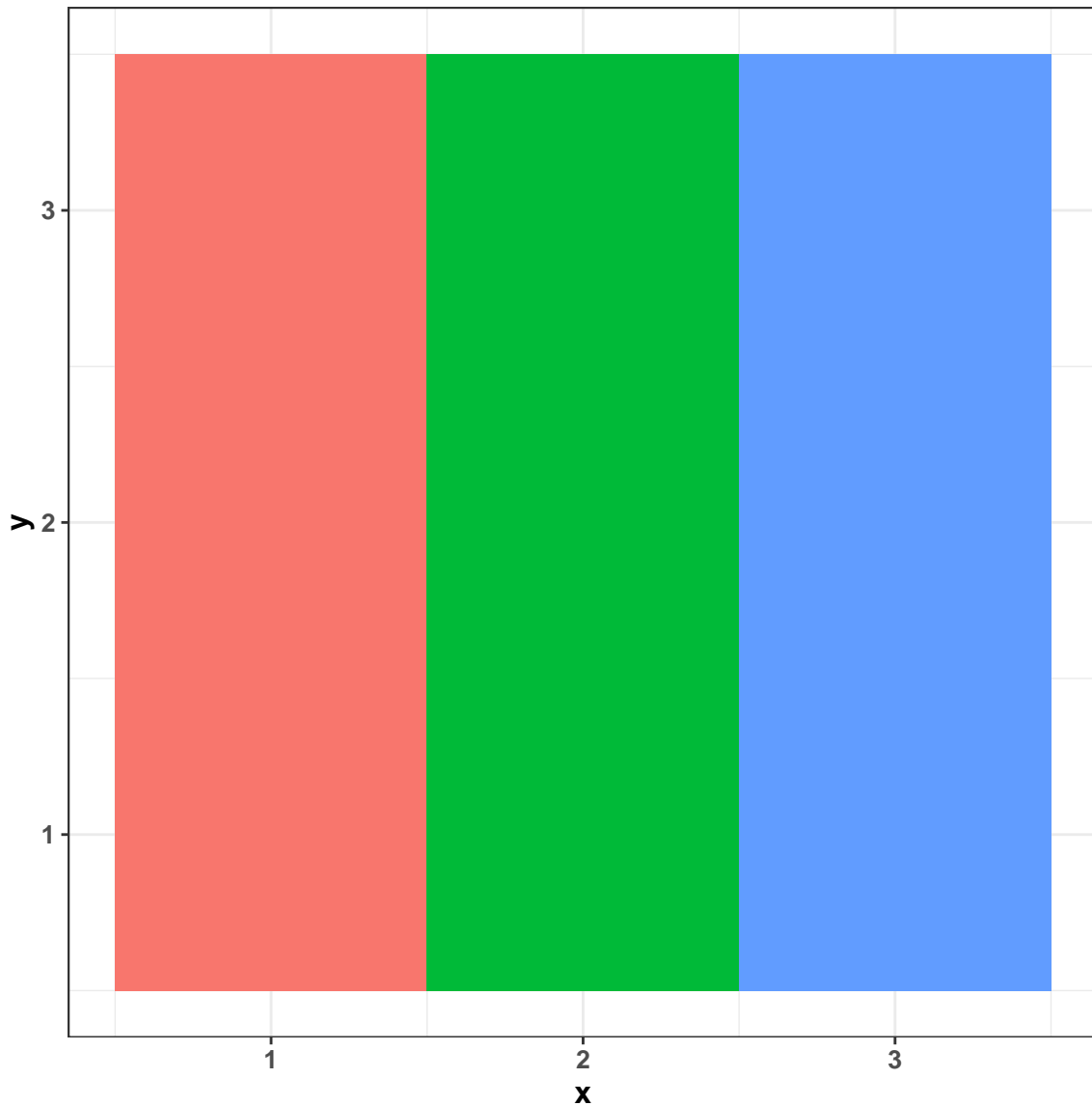
spectrum xy_2_1



spectrum xy_1_1



Spatial orientation of annotated data

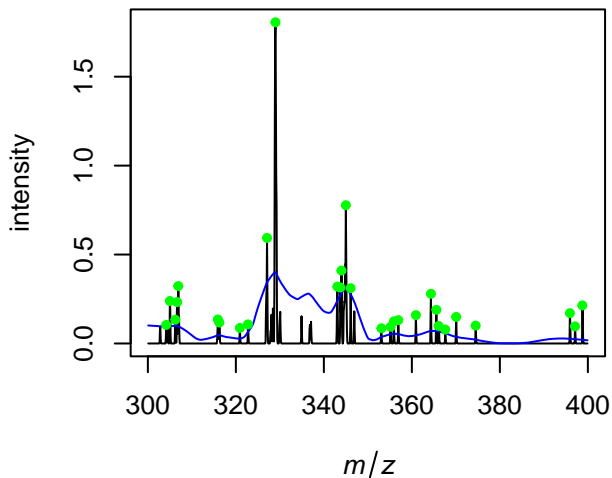


annotation

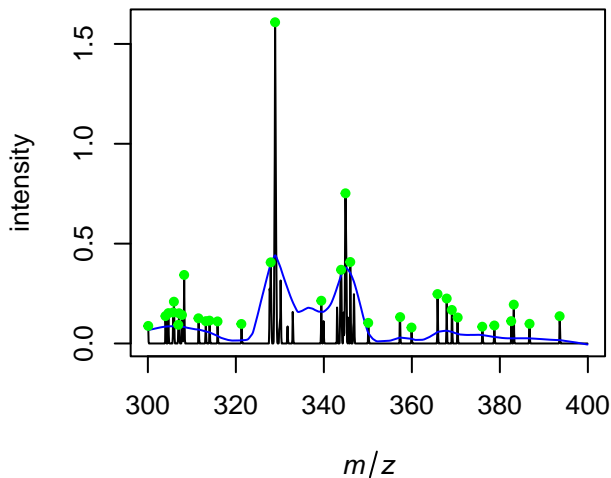
col1 col2 col3

S/N in blue and picked peaks in green

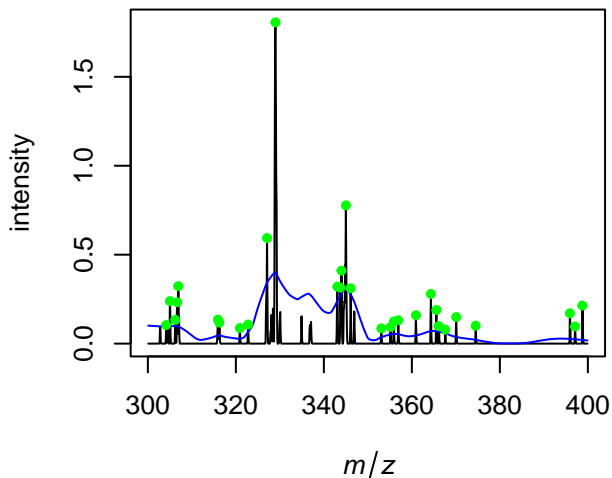
spectrum col1



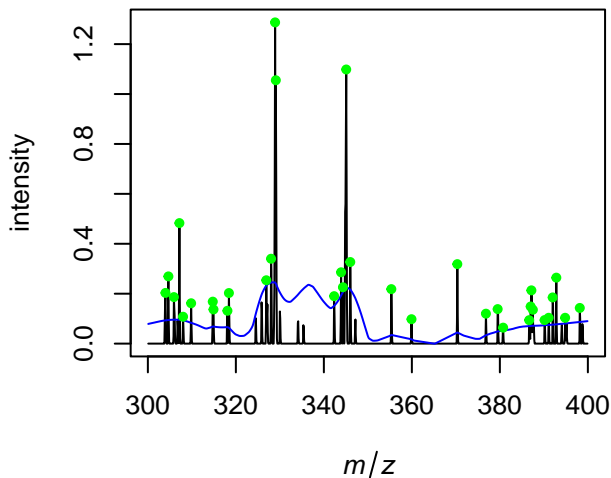
spectrum col2



spectrum col1

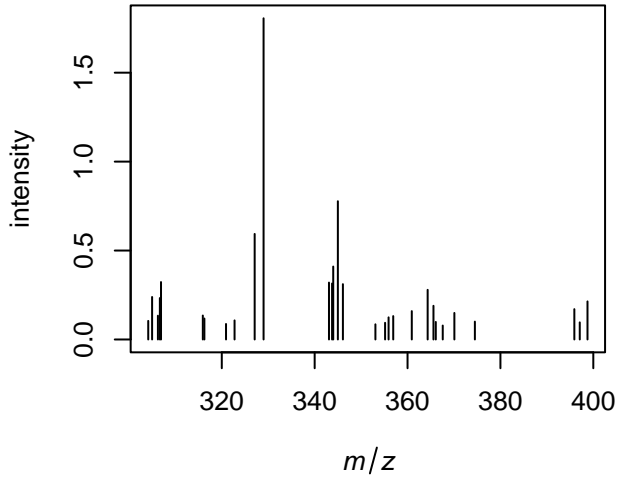


spectrum col3

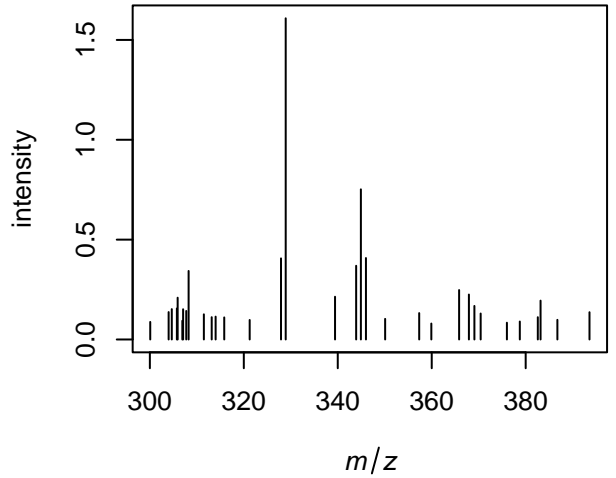


Picked peaks

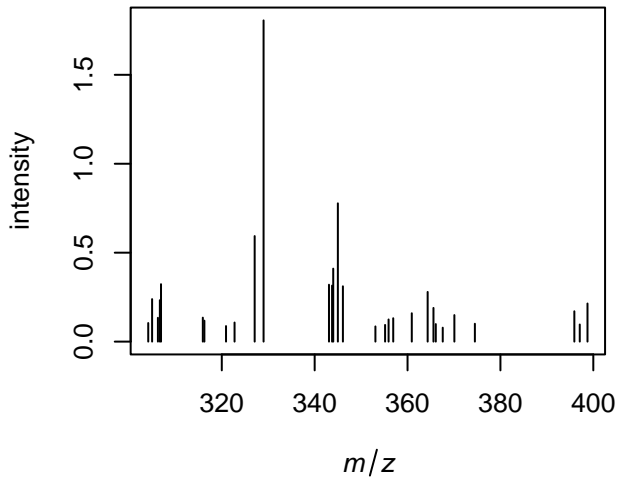
spectrum col1



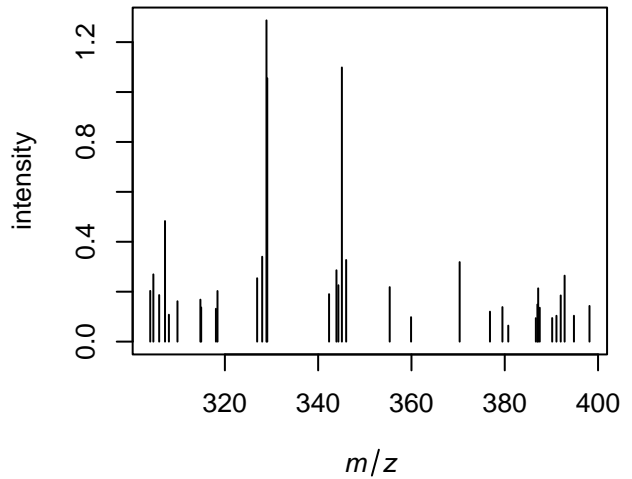
spectrum col2



spectrum col1



spectrum col3



	min m/z	max mz	# features	median # peaks (int.>0)	median intensity	# spectra
<i>inputdata</i>	300.0833	399.9167	1199	1199	0	9
<i>peaks_picked</i>	300.0833	398.75	90	32.67	0.15	3