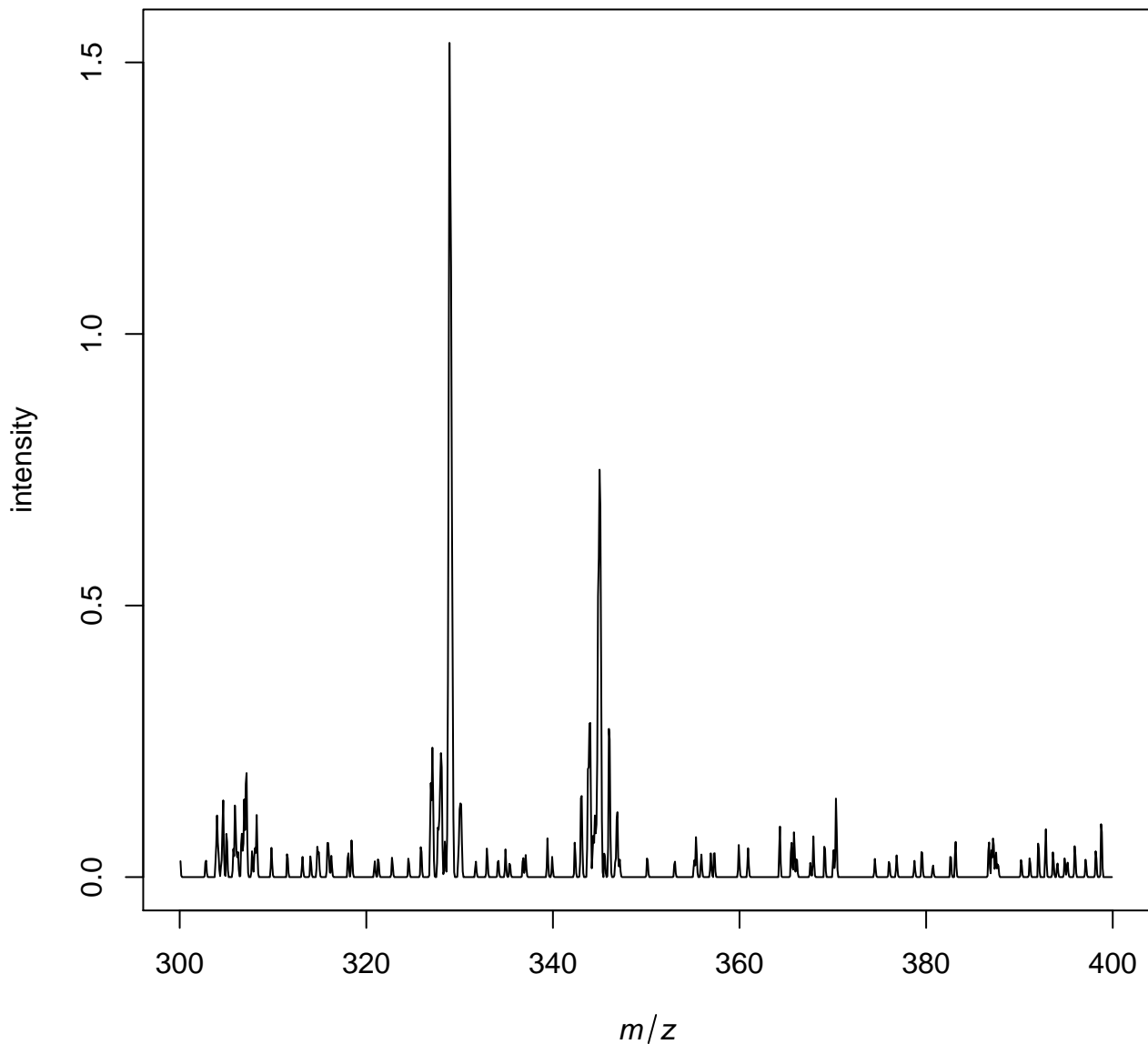
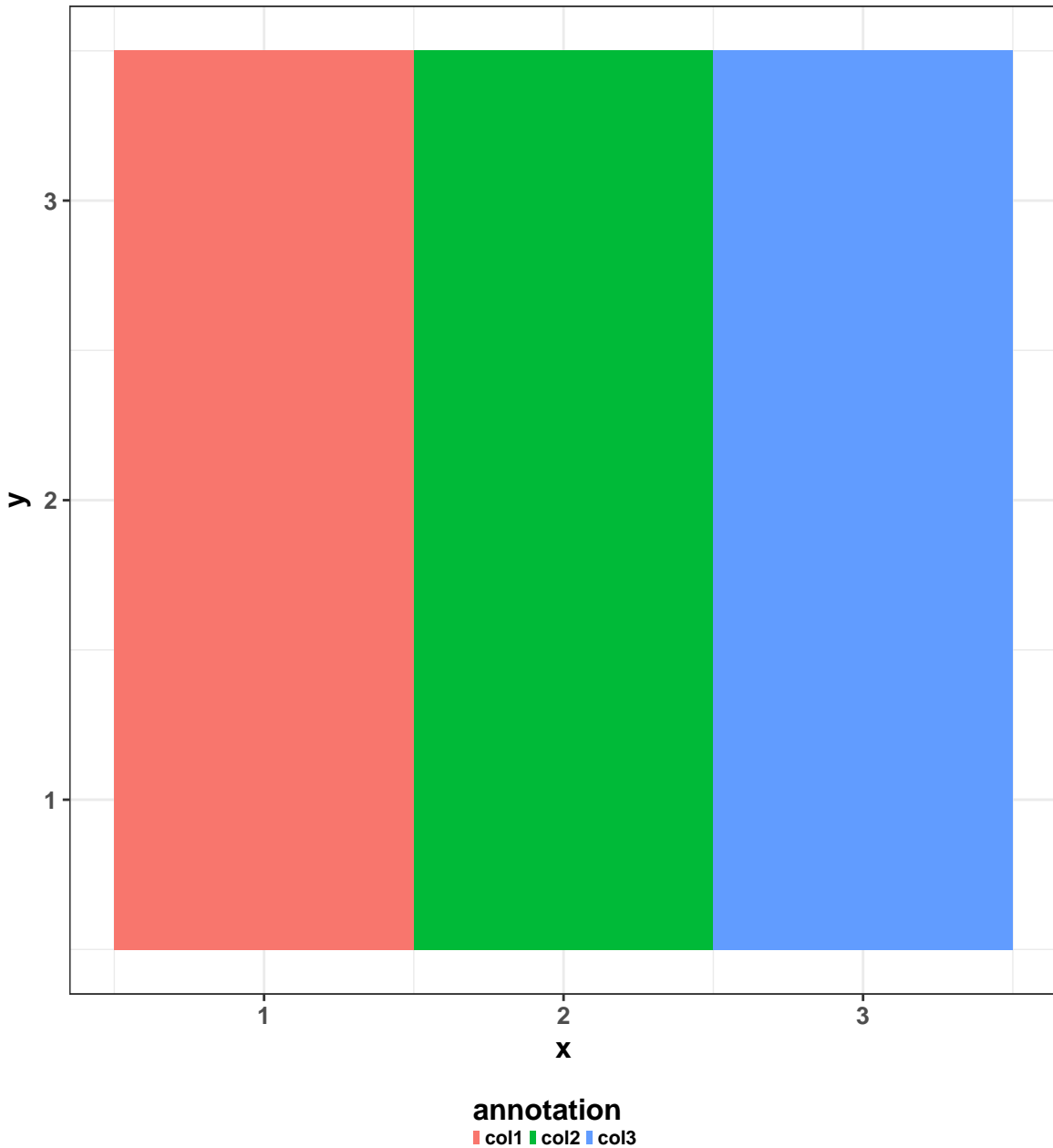


## Example\_Continuous.i

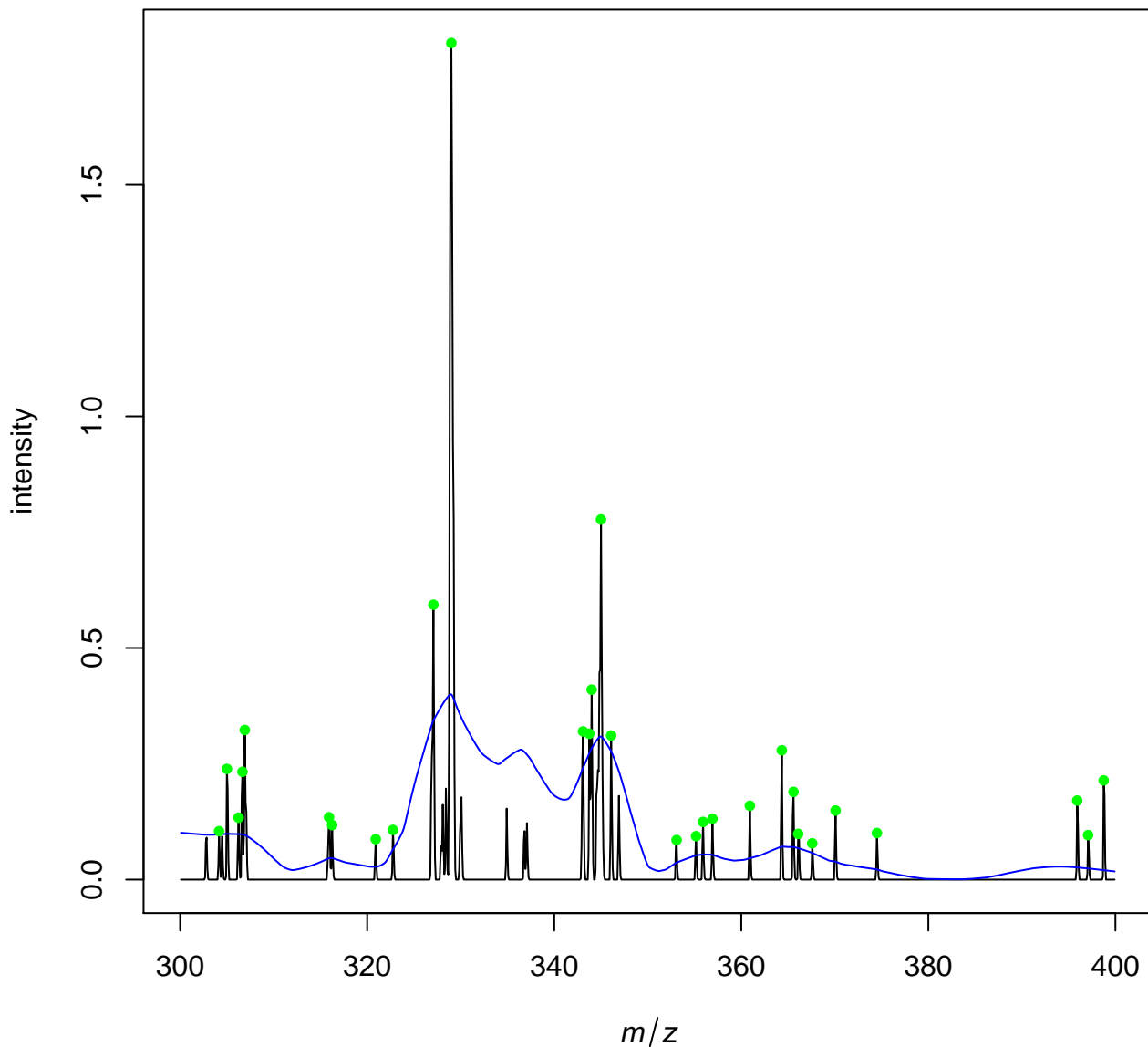
# Average spectrum of input file



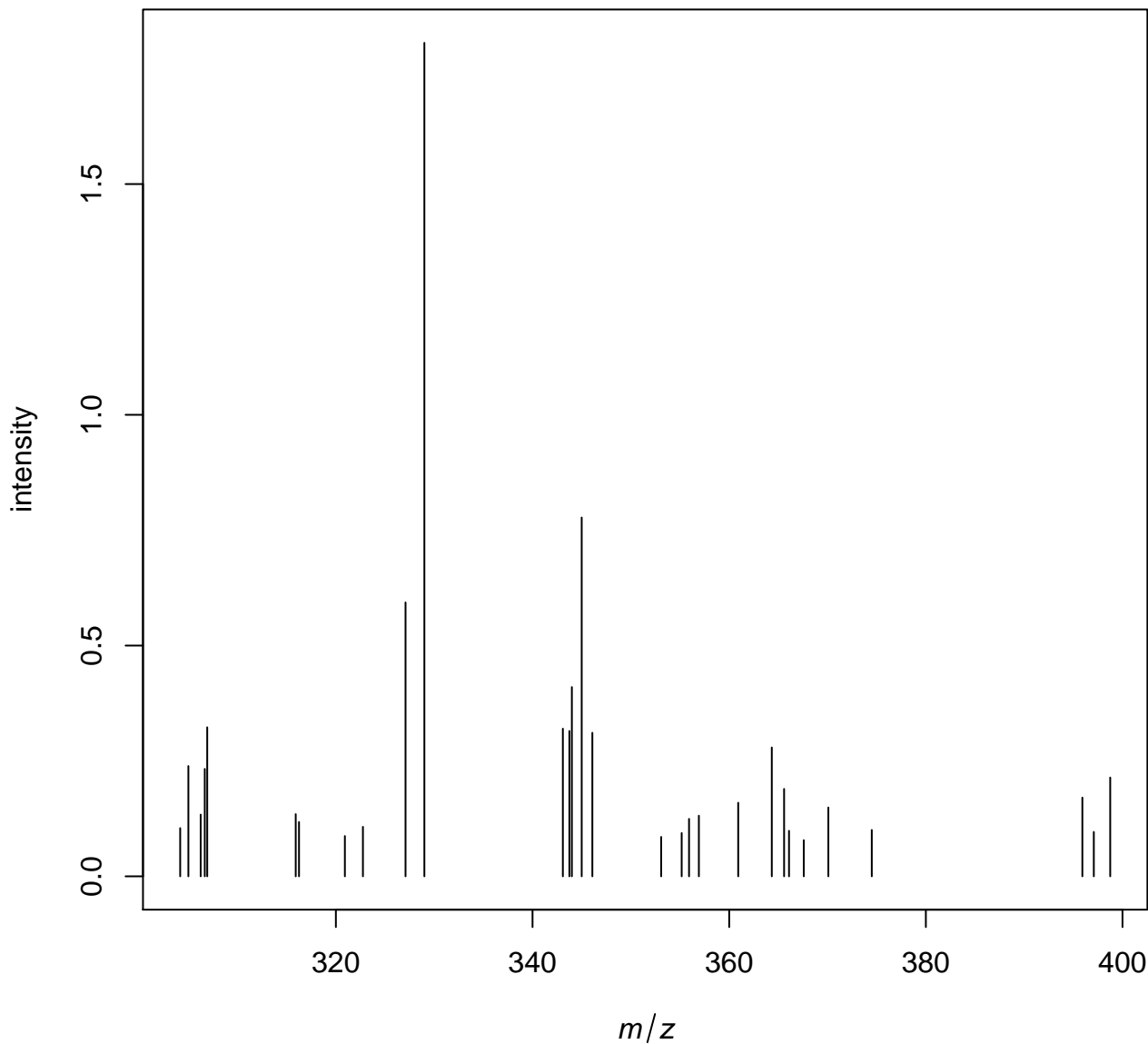
# Spatial orientation of annotated data



# First spectrum with noise line (blue) and picked peaks (green)



# First spectrum after peak detection



	<b>min m/z</b>	<b>max mz</b>	<b># features</b>	<b>median # features</b>	<b>median intensity</b>
<i>inputdata</i>	300.0833	399.9167	1199	1199	0
<i>peaks_picked</i>	300.0833	398.75	90	32.67	0.15