

chicken

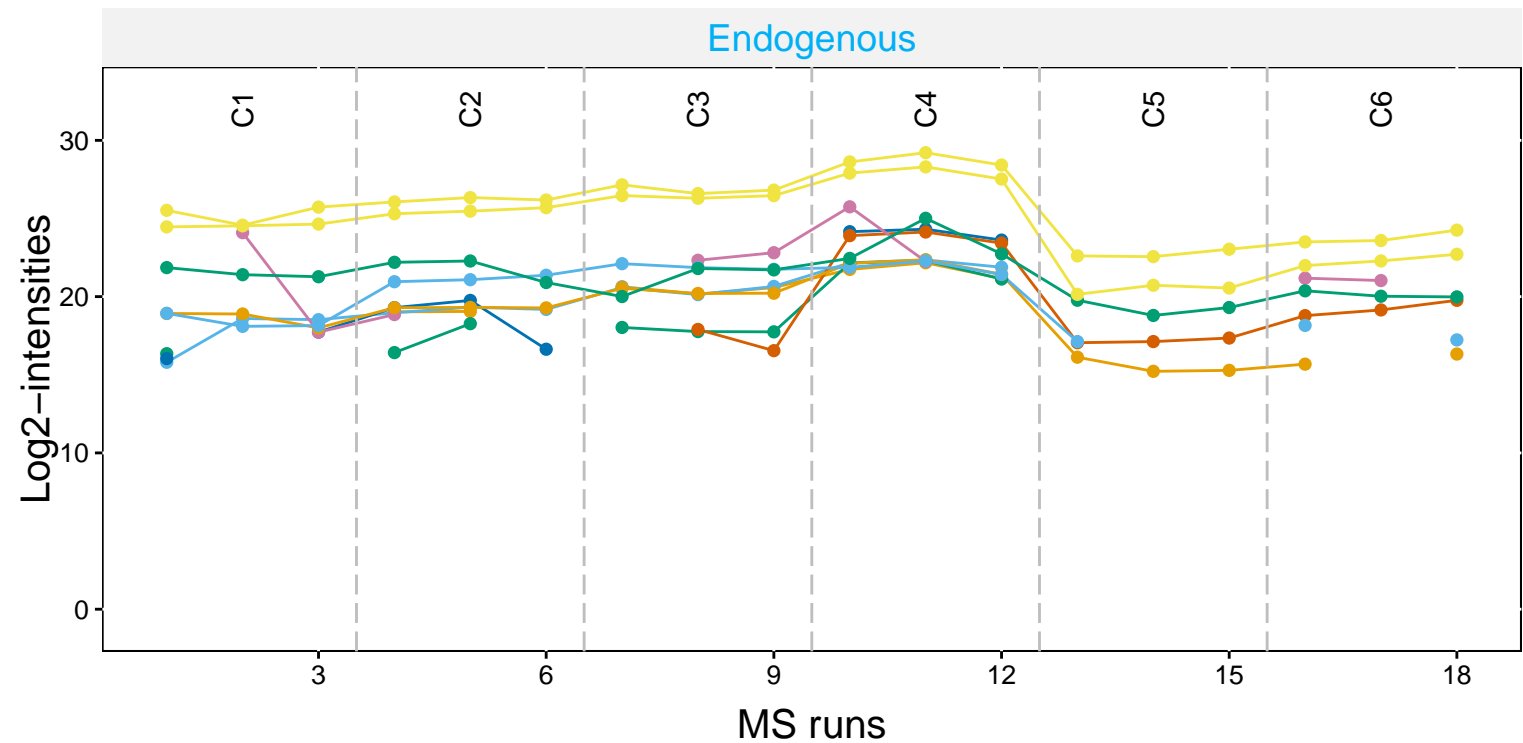
data ○ Censored missing data

peptide: 11

● D.GSTDYGILQINSR_423_NA_423_NA
● E.SNFNTQATNR_159_NA_159_NA
● K.FESNFNTQATNR_435_NA_435_NA
● K.FESNFNTQATNR_437_NA_437_NA

● K.FESNFNTQATNR_439_NA_439_NA
● K.FESNFNTQATNR_443_NA_443_NA
● K.FESNFNTQATNR_444_NA_444_NA
● K.RHGLDNYR_72_NA_72_NA

● N.TDGS
● R.HGLD
● R.NTDS



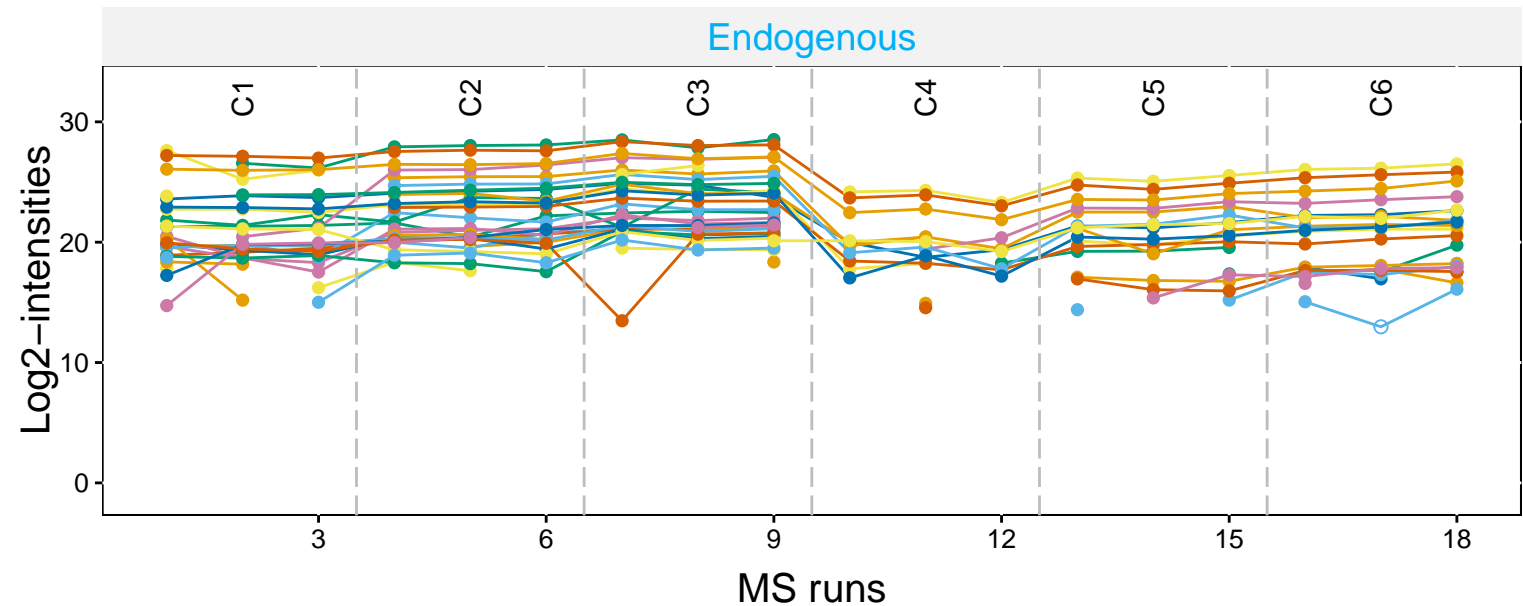
cyc_horse

Censored missing data

peptide: 32

- A.PGFTYTDANK_129_NA_129_NA
- A.PGFTYTDANK_130_NA_130_NA
- A.PGFTYTDANK_131_NA_131_NA
- A.PGFTYTDANKNK_367_NA_367_NA
- G.PNLHGLFGR_65_NA_65_NA
- G.QAPGFTYTDANK_327_NA_327_NA
- K.EETLM[147.0354]EYLENPKK_631_NA_631_NA
- K.EETLMMEYLENPKK_622_NA_622_NA
- K.GITWKEETLMEYLENPK_391_NA_391_NA
- K.GITWKEETLMEYLENPK_901_NA_901_NA
- K.HKTGPNLHGLFGR_449_NA_449_NA
- K.HKTGPNLHGLFGR_49_NA_49_NA
- K.KTEREDLIAY_263_NA_263_NA
- K.KTEREDLIAYLK_495_NA_495_NA
- K.KTEREDLIAYLK_54_NA_54_NA
- K.TEREDLIAYLK_363_NA_363_NA
- K.TGPNLHGLFGR_183_NA_183_NA
- K.TGPNLHGLFGR_184_NA_184_NA
- K.TGPNLHGLFGRK_313_NA_313_NA
- K.TGQAPGFTYTDANK_484_NA_484_NA
- K.TGQAPGFTYTDANK_486_NA_486_NA
- K.TGQAPGFTYTDANK_487_NA_487_NA
- K.KTEREDLIAYLK_495_NA_495_NA
- K.KTEREDLIAYLK_54_NA_54_NA
- K.TEREDLIAYLK_363_NA_363_NA
- K.TGPNLHGLFGR_183_NA_183_NA
- K.TGPNLHGLFGR_184_NA_184_NA
- K.TGPNLHGLFGRK_313_NA_313_NA
- K.TGQAPGFTYTDANK_484_NA_484_NA
- K.TGQAPGFTYTDANK_486_NA_486_NA
- K.TGQAPGFTYTDANK_487_NA_487_NA

Endogenous

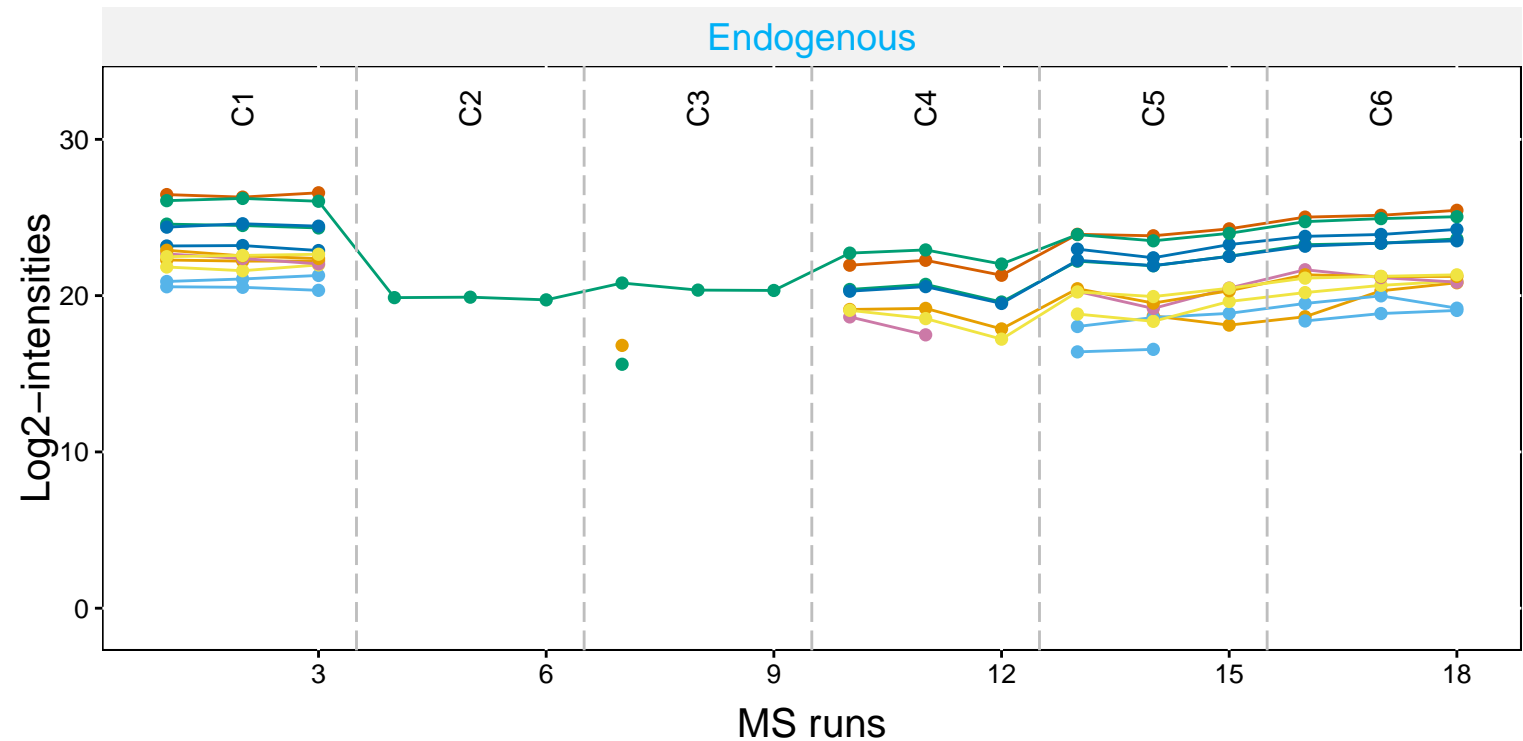


myg_horse

data ○ Censored missing data

peptide: 12

- A.DIAGHGQEVLR_321_NA_321_NA
- D.IAGHGQEVLR_203_NA_203_NA
- E.ADIAGHGQEVLR_384_NA_384_NA
- I.AGHGQEVLR_99_NA_99_NA
- K.HGTVVLTALGGILK_386_NA_386_NA
- K.VEADIAGHGQEVLR_605_NA_605_NA
- K.VEADIAGHGQEVLR_94_NA_94_NA
- L.FTGHPEPLEK_170_NA_170_NA
- L.FTGHPEPLEK_170_NA_170_NA
- L.FTGHPEPLEK_170_NA_170_NA
- R.LF...
- R.LF...
- V.EA...



rabbit

Censored missing data

peptide: 31

- -.PHSHPALTPEQK_347_NA_347_NA
- -.PHSHPALTPEQK_35_NA_35_NA
- F.HETLYQK_39_NA_39_NA
- F.LSGGQSEEEASINLNAINK_861_NA_861_NA
- I.LAADESTGSIK_176_NA_176_NA
- K.ADDGRPFQVIK_352_NA_352_NA
- K.ALSDHHIYLEGTLTKPN_297_NA_297_NA
- K.ALSDHHIYLEGTLTKPN_852_NA_852_NA
- K.ELSDIAHR_44_NA_44_NA
- K.ELSDIAHR_45_NA_45_NA
- K.GILAADESTGSIK_334_NA_334_NA
- K.GILAADESTGSIK_336_NA_336_NA
- K.GILAADESTGSIK_337_NA_337_NA
- K.IGEHTPSALAIMENAN_671_NA_671_NA
- K.KDGAFAK_16_NA_16_NA
- K.KELSDIAHR_93_NA_93_NA
- K.RLQSIGTENTEENR_644_NA_644_NA
- K.RLQSIGTENTEENR_646_NA_646_NA
- K.RLQSIGTENTEENR_647_NA_647_NA
- K.RLQSIGTENTEENR_648_NA_648_NA
- K.YSHEEIAM[147.0354]ATVTALR_698_NA_698_NA
- K.YSHEEIAMATVTALR_688_NA_688_NA

